



JOCDE0CB-M5

Rev.A.1.0

) -o#k@u@V

7KH SURGXFWV DUISWBWFRXGSLYUW LQ WKH 623
 SDFNDJH 7KH GHYLDQ FRQQVDUWG R(' RSWLFDQO\
 FRXSOHG WR DQ LQVQHJKLDW HGS HKH GKSJKR WRGHWHFWRU
 ,& FKLS ,W SURYLGHV JXDUDQWHHG SHUIRUPDQFH DQG VSI
 DW WHPSHUDWXUWXS WR\VLFDQO\ VPDOOHU DQG
 FRPSOLDQW ZLWK LQWHUQDWLRQDO VDIHW\ VWDQGDUGV IR
 LQVXODWLRQ ,W WKXV SURYLGHV D VPDOOHU IRRWSULQW
 IRU DSSOLFDWLRQV WKDW UHTXLUH VDIHW\ VWDQGDUG FHU
 LQWHUQDO QRLGHVVDLWXODGDSQRMHG FRPPRQ PRGH
 WUDQVLHQW LPPXQLW\LRILGHDD MRU7VPDOO FODVV ,*
 DQG SRZHU 026)(7 JDWH GULYH 7KH SURGXFWV DUH ZLGHO
 LQ LQGXVWULDO LQYHUVHUV 026)(7JDWH GULYHUV
 LQGXFWRQ FRRNWRS DQG KRPH DSSOLDQFHV

U ° @ 7- ° uyk-o

\$ PD[LXP SHDN RXWSXW FXUUHQW
 +LJK LVRODWLRQ 9506
 %XIIHU ORJLF W\SH
 2SHUDWLQJ WHPSHUJHWXU WR f &
 5(\$+ 5R+6 FRPSOLDQFH
 +%0 + \$ 00 0 &'0 &
 &4& DSSURYHG
 9'(DSSURYHG
 8/ DSSURYHG

u u

,QSXW	/('	2XWSXW
+	21	/
/	2))	+

° "o\QyU-U ° @yU k ° u@8o 7HP SHUDWXUH f &

Parameter	Symbol	Value	Uni	mn
-----------	--------	-------	-----	----



	3RZHU 'LVVLSDWLRQ	3'		P :
'HWHFWRU	2XWSXW 9ROWDJH	2	9	
	6XSSO\ 9ROWDJH	9&&		
	3RZHU 'LVVLSDWLRQ	3&		P :
,VRODWLRQ 9ROWDJH	9LVR		8	9UPV
2SHUDWLQJ 7HPSHUDWXUH	7RSU		a	
-XQFWLRQ 7HPSHUDWXUH	7M			
6WRUDJH 7HPSHUDWXUH	7VWJ		a	
7RWDO 3RZHU 'LVVLSDWLRQ	3WRW			P :
6ROGHULQJ 7HPSHUDWXUH	7VRO			

V\U- íì • %µο• U íì, Ì (œ ‹µ v Ç
 V\U- (}œ íu]vµš U ZX, XAđì• òì9

-O#uk@° O# = ° k° #u-k@u@o 7HPSHUDWXUH f &

Parameter	Symbol	Condition	Min.	Typ.	Max.	Unit
, Q SXW)RUZDUG 9ROWDJH)) 9P \$,			9
	5HYHUVH &XUUHQW	5 9	9			\$
	7HUPLQDO &DSDFLWDQ	7H I 0+&				S)
3HDN +LJK OHYHO 2XWSXW* 1' &XUUHQW	,23+) P \$				P \$
		9&& 9				P \$
) P \$				P \$
		9&& 9				P \$
3HDN /RZ OHYHO 2XWSXW 92 9 &XUUHQW	,23/	9&& 92 9				P \$
		9&& 92 9				P \$
+LJK /HYHO 6XSSO\ &XUUHQW	,&&+) P \$				P \$
		9&& 9				P \$
2XWSXW) P \$				P \$
		9&& 9				P \$

/RZ /HYH—B% €0 Å' &&+



			9) 9				9
	7KUHVKROG ,Q SXW &XUUHQW) / +	9&& 9 9 ₂ Ú 9				P \$
	7KUHVKROG ,Q SXW 9ROWDJH	9) + /	9&& 9 9 ₂ Ø 9				9
	6XSSO\ 9ROWD	JH 9&&					9

of @#=@/8'ch-#@# u@V'

Parameter	Symbol	Condition	Min.	Typ.	Max.	Unit
3URSDJJDWLRQ 'HOD\ 7LPH WR +LJK 2XWSXW /HYHO	W ₊	5J &J Q)) : P \$ 9&& 9				Q V
3URSDJJDWLRQ 'HOD\ 7LPH WR /RZ 2XWSXW /HYHO	W ₊	5J &J Q)) : P \$ 9&& 9				
3URSDJJDWLRQ 'HOD\ 'LIIHUHQFH %HWZHHQ \$Q\ 7ZR 3DUWV	W ₊ / W ₊	5J &J Q)) 8 : P \$ 9&& 9				
2XWSXW 5LVH 7LPH	W _R	5J &J Q)) : P \$ 9&& 9				
2XWSXW)DOO 7LPH	W _R	5J &J Q)) : P \$ 9&& 9				
&RPPRQ 0RGH 7UDQVLHQW ,PPXQLW\ DW +LJK /HYHO 2XWSXW	W ₊ & 0) P \$ 9&& 9 7D 9 ₂ PLQ 9&0 9 S \$				N 9 V
&RPPRQ 0RGH 7UDQVLHQW ,PPXQLW\ DW /RZ /HYHO 2XWSXW	W ₊ & 0) P \$ 9&& 9 7D 9 ₂ PD [9 9&0 9 S \$				N 9 V

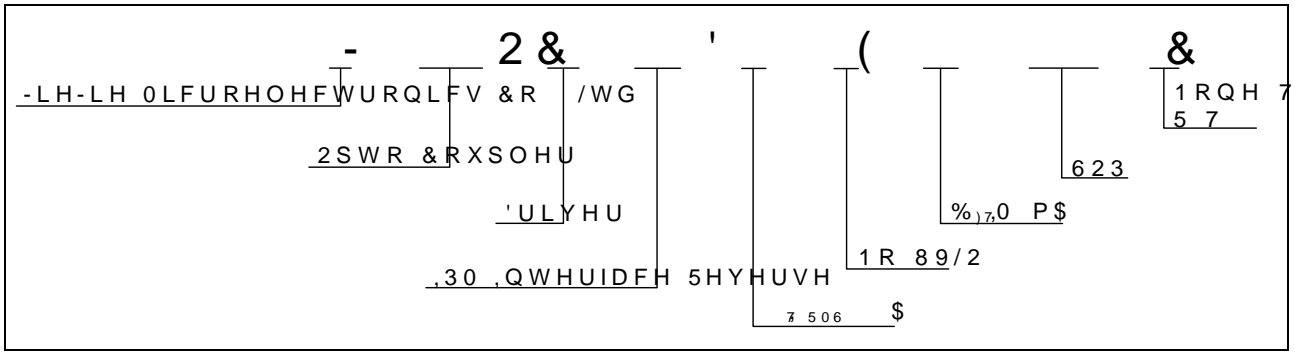
oo dÇ%o] o Âîñµ • š d
V W /v%o µš •]Pv o ~(Aîñl, ìU µšÇ Añ]i9 b š•CEŠZš (vA ññ •%o) &CE Áoz } •Z X] v
%oCE} v •šCE Ç Á]CE]vP %o]š v X



k	\	#	78 .			
Characteristics	Symbol	Min.	Typ.	Max.	Unit	



\k) -k@8@7\kU °u@V



U °kM@8'



FIG.7: /RZ OHYHO 2WWSXW V9RSP
7HPSHUDWXUH

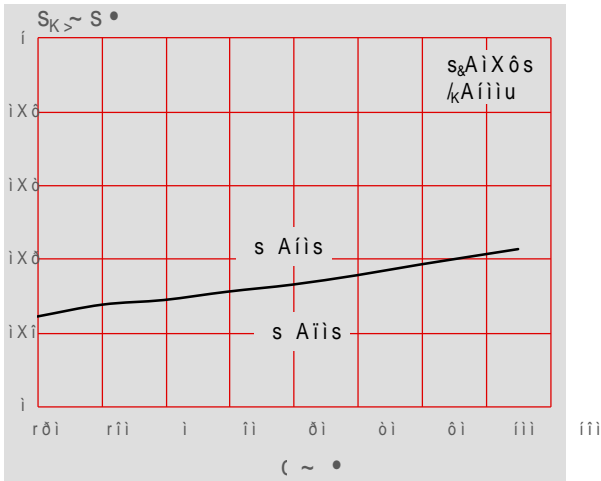


FIG.8: +LJK OHYHOR 2XWDSXWY 9
7HPSHUDWXUH

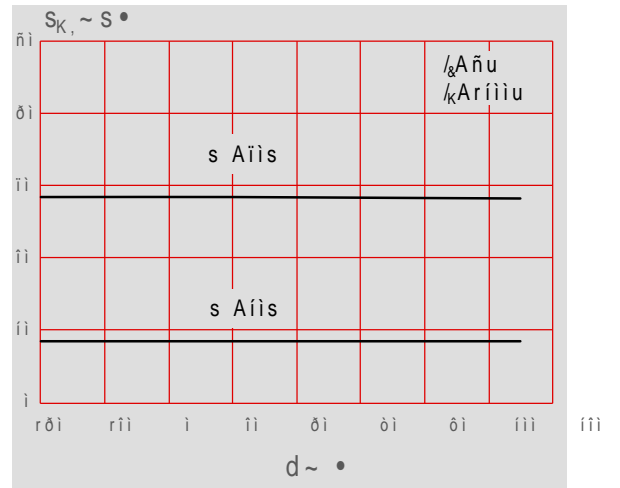


FIG.9: /RZ OHYHO 2WWSXW V9R3HDN /R
OHYHO 2XWSXW &XUUHQW

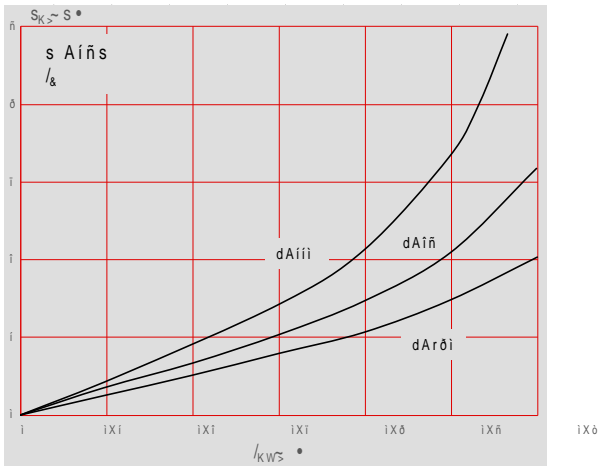
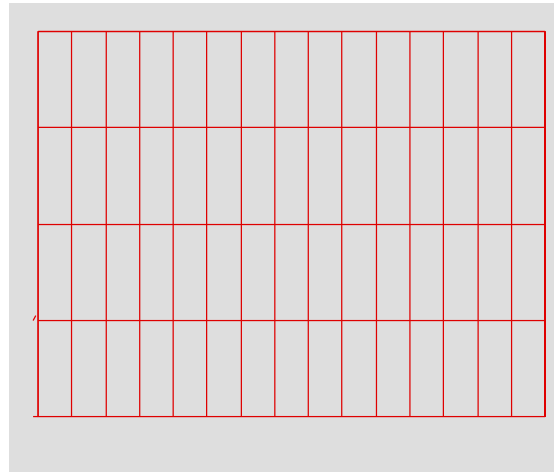


FIG.10: +LJK OHYHO 2XWSXW 9ROWD
3HDN +LJK OHYHO 2XWSXW &XUUHQW





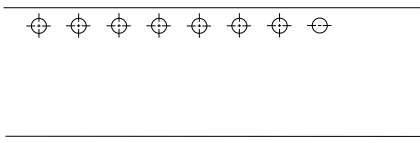
h) y . . .

'LPHQVLRQV
5HI 0LOOLPHWHUV ,QFKHV
0LQ 7\ S 0D[0LQ 7\ S 0D[
\$
%
&
'
(
)
*
+
,
-

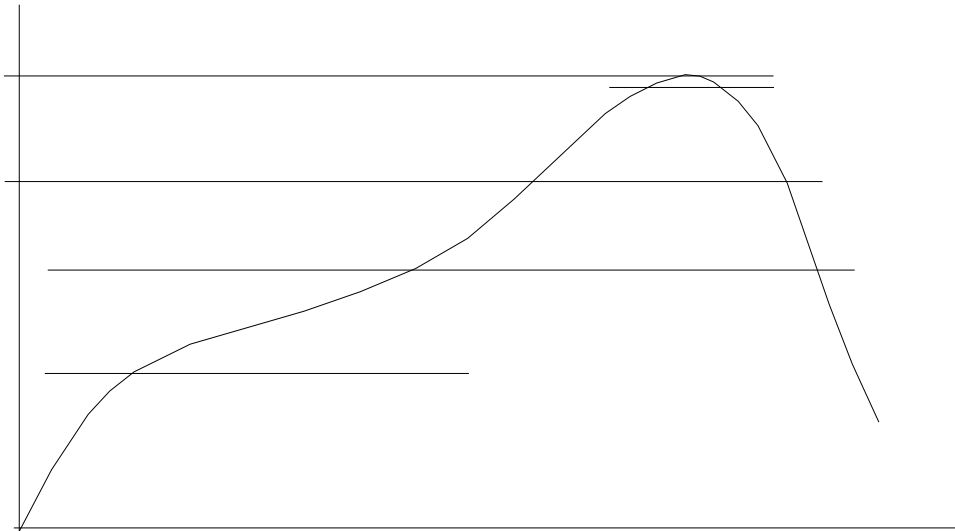
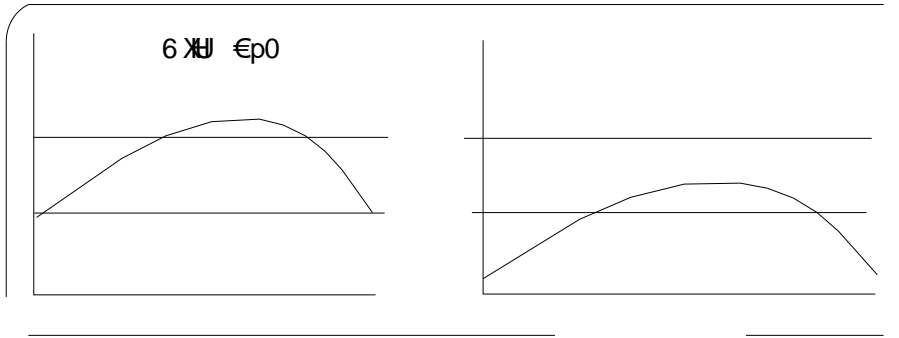


#° kk@k'ù h- 'dh-#@# u@ Vo')

Option None



k-70A ‡ @7A kU ° u@V



1RWH

5HIORZ VROGHULQJ LV UHFRPPHQGHG/ DWKRVZQH QVHPSHWDWXXDQ WXB
\$YRLG GLUHFW FRQVWDHFRPHFRZDQWXRUDFRU H[FHHGLQJ LWV PD
VWRUDJH WHPSHUDWXUH

\$SSOLFDWLRQ RKHSURVXENRQLWLSOHGDDWHG WHPSHUDWXUHV ,QV
VFHQDULRV DQHPSVOLGRWRHFFHHG 1

(QVXUH WKH FRPSRQHQW KDV FRROHG SURFPHWKDQZLXPSWHDXHCL
PDQXIDFWXULQJ VWHSV

7KH FRPSRQHQW KDV BQKHODUZKHQVWDQGHGKFRQGLWLRQV

5HFRPPHQG VWRUDJH 7HPS a f&

5HFRPPHQG VWRUDJH ðÈPLGLW\

06/ OHYHO 06/

,QIRUPDWLRQ IXUQÈFKQW ILQ WKOLHGRHG WR EH DFFXUDWH D
-LDQJVVX -LH-LH 0L&URRHOWHG WDVROÈFHVQLRV UHRUSRQVLEFRQVHT
RI XVH ZLWKRXW FRQVLGHUDWLRQ IRG MWFKQIQURFUDVLRQ
LQ WKLV GRFÈPHQFKLQJYXZLWFKFRXWRQRWLFH DSDUW IURP V
VLJQH G -LDQJVVXOLHVLZILFRKPWKH DJUHHPHQW
3URGXFWV DQG LQIRUPDWLRQ SURYLGHG LQOPWQWVRGFSÈVPH
-LDQJVVX -LH-LH DVVXIPHLOQW\URVSDQVLQIULQJHPPHQW RI RW
ZKLFK PD\ UHVXOW IURP WKH XVH RI VXFK SURGXFWV DQGML