

JOCHC15B

	Common Mode Transient Immunity at Logic High	CM _H	I _F =0mA, V _{CM} =1000Vpp, C _L =15pF, V _{CC} =5V	20	-	-	kV/μs
	Common Mode Transient Immunity at Logic Low	CM _L	I _F =7mA, V _{CM} =1000Vpp, C _L =15pF, V _{CC} =5V	20	-	-	kV/μs
	Output Rise Time	t _r	I _F =7mA,C _L =15pF	-	10	-	ns
	Output Fall Time	t _f		-	10	-	

Recommended Operating Conditions

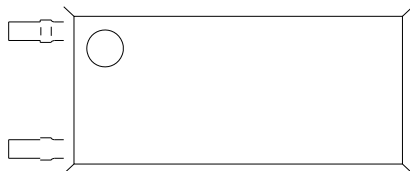
Characteristics	Symbol	Min.	Typ.	Max.	Unit
Operating Temperature	T _a	-40	-	105	
Supply Voltage	V _{CC}	2.7	-	5.5	V
Low Level Input Current	I _{FL}	0	-	250	μA
High Level Input Current	I _{FH}	8	-	I	

ORDERING INFORMATION

<p>J</p> <p>JieJie Microelectronics Co., Ltd.</p> <p>Opto Coupler</p> <p>Single CMOS Inverting Push-Pull</p>	<p>OC</p> <p>High speed</p>	<p>H</p>	<p>C</p>	<p>1</p> <p>3V V_{CC} 7V</p>	<p>5</p> <p>15MBd high speed</p>	<p>B</p> <p>I_{FT} 5mA</p>	<p>-L5X</p>	<p>/</p> <p>None:T1 R:T2</p> <p>None:LSOP5 W:LSOP5W</p>
---	------------------------------------	-----------------	-----------------	--	---	--	--------------------	--

Packing Quantity	
Option	Quantity
None/R	3000 Units/Reel

MARKING



Characteristics Curves

FIG.1: Forward Current vs. Forward Voltage

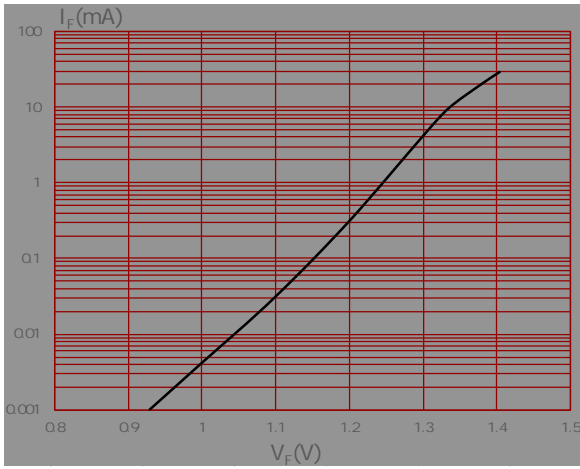


FIG.2: Max. Allowable LED Forward Current vs. Ambient Temperature

FIG.7: Propagation Delay vs. Ambient Temperature

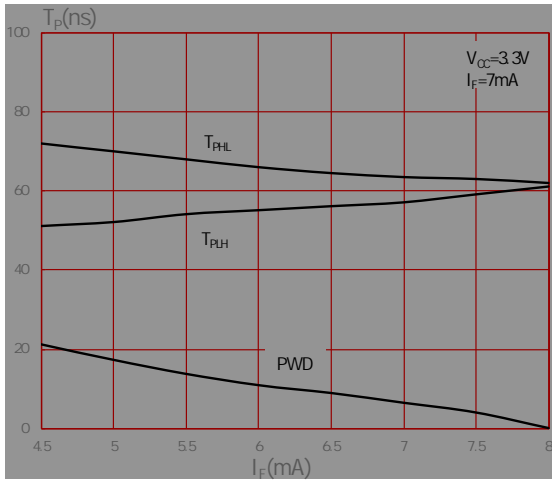
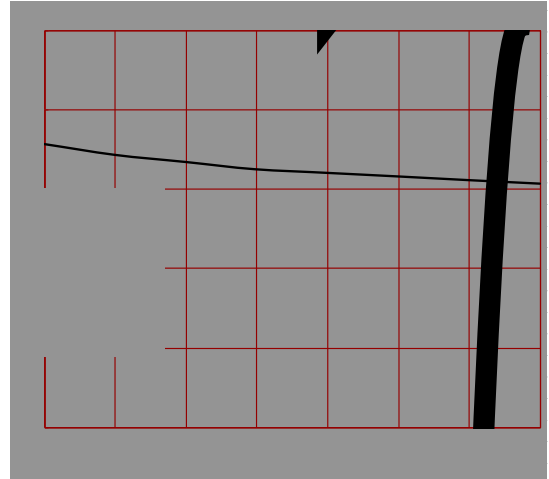


FIG.8: Propagation Delay vs. Ambient Temperature



Package Dimension (Unit: mm)

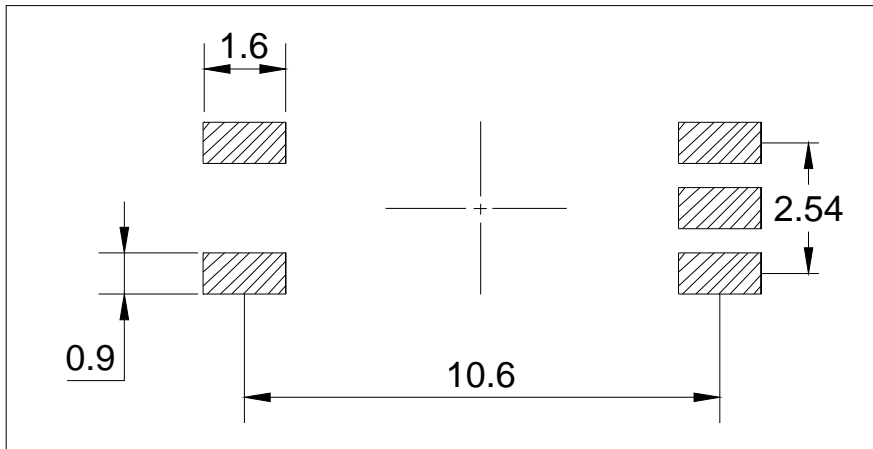
LSOP5



Ref.	Dimensions					
	Millimeters			Inches		
	Min.	Typ.	Max.	Min.	Typ.	Max.
A	7.40		7.80	0.291		0.307
B	3.40		3.80	0.134		0.150
C	0.00		0.20	0.000		0.008
D	1.80		2.20	0.071		0.087
E	8.10		8.70	0.319		0.343
F	0.40		1.00	0.016		0.039
G	9.90		10.50	0.390		0.413
H	0.10		0.30	0.004		0.012
I	1.80		2.40	0.071		0.094
J	0.25		0.55	0.010		0.022
K						

RECOMMENDED SOLDER MASK (Dimensions in mm unless otherwise stated)

LSOP5

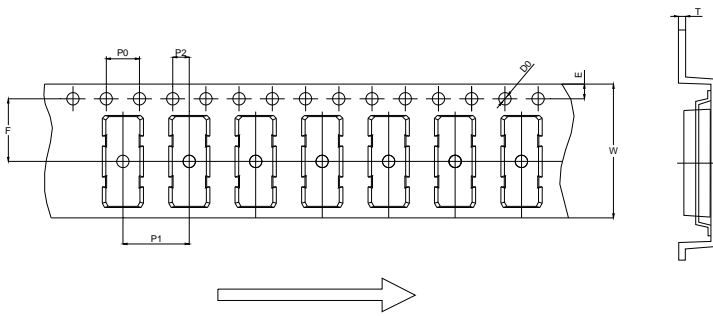


LSOP5W

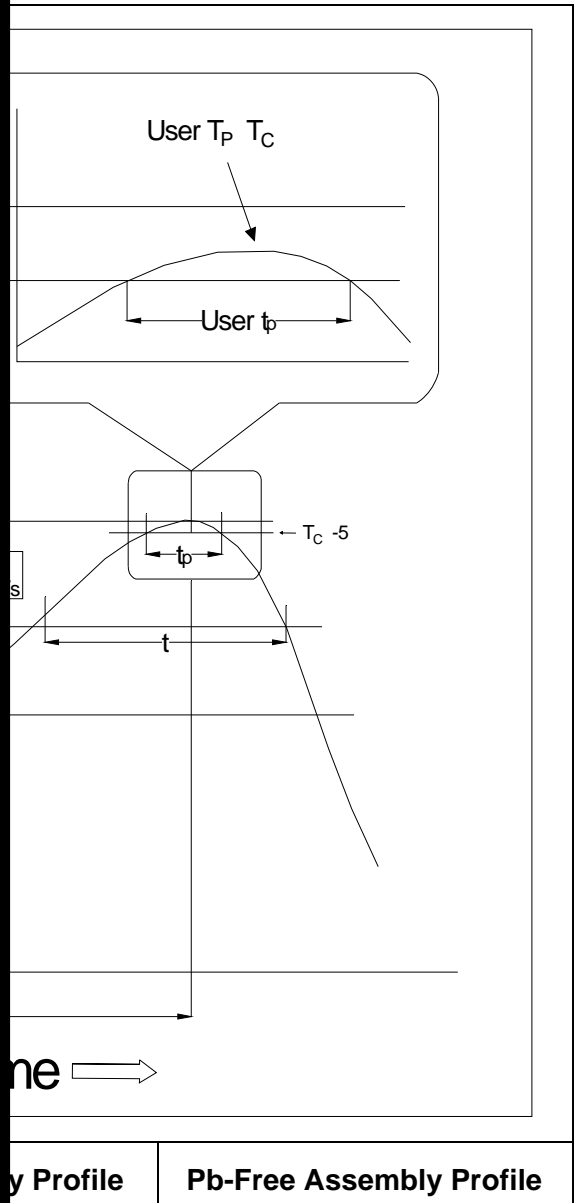


CARRIER TAPE SPECIFICATIONS (Dimensions in mm unless otherwise stated)

Option None/R



Ref.	Dimensions					
	Millimeters			Inches		
	Min.	Typ.	Max.	Min.	Typ.	Max.
D0	1.50	1.55	1.60	0.059	0.061	0.063
P0	3.90	4.00	4.10	0.154	0.157	0.161
P1	7.90	8.00	8.10	0.311	0.315	0.319
P2	1.90	2.00	2.10	0.075	0.079	0.083
E	1.65	1.75	1.85	0.065	0.069	0.073
F	7.40	7.50	7.60	0.291	0.295	0.299
T	0.35	0.40	0.45	0.014	0.016	0.018
W	15.80	16.00	16.20	0.622	0.630	0.638



Profile


Pb-Free Assembly Profile

Note:

1. Reflow soldering is recommended at the temperatures and times shown, no more than three times.
2. Avoid direct contact between the epoxy body and any tools or surfaces exceeding its maximum storage temperature.
3. Application of pressure on the epoxy body is prohibited at elevated temperatures. In specific scenarios, any applied force must not exceed 2.5N.
4. Ensure the component has cooled to ambient temperature before proceeding with any subsequent manufacturing steps.
5. The component has a shelf life of one year when stored under standard conditions.
6. Recommend storage Temp.: 0~40°C;
Recommend storage humidity: <60%;
MSL level: MSL 1

Information furnished in this document is believed to be accurate and reliable. However, Jiangsu JieJie Microelectronics Co., Ltd. assumes no responsibility for the consequences of use without consideration for such information nor use beyond it. Information mentioned in this document is subject to change without notice, apart from that when an agreement is signed, Jiangsu JieJie complies with the agreement.

Products and information provided in this document have no infringement of patents. Jiangsu JieJie assumes no responsibility for any infringement of other rights of third parties which may result from the use of such products and information. This document supersedes and replaces all information previously supplied.

 is a registered trademark of Jiangsu JieJie Microelectronics Co., Ltd.

Copyright © 2026 Jiangsu JieJie Microelectronics Co., Ltd. All rights reserved.