



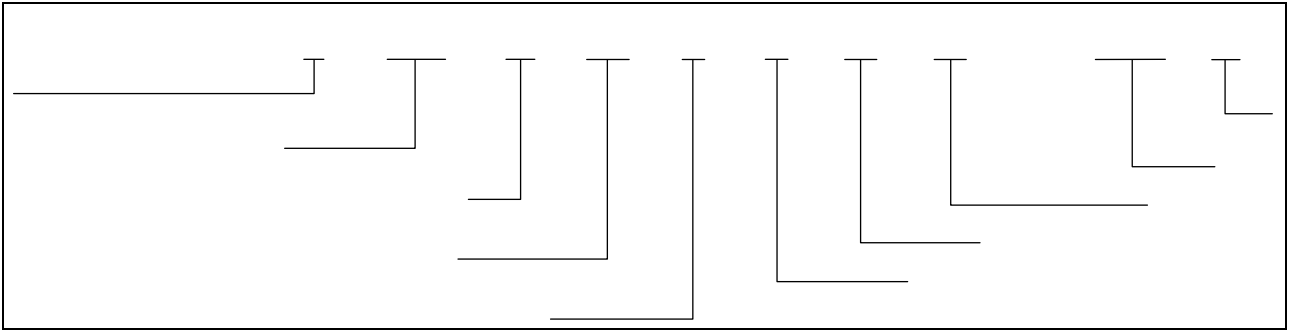

NOTE1:

NOTE2:

**ELECTRICAL CHARACTERISTICS**

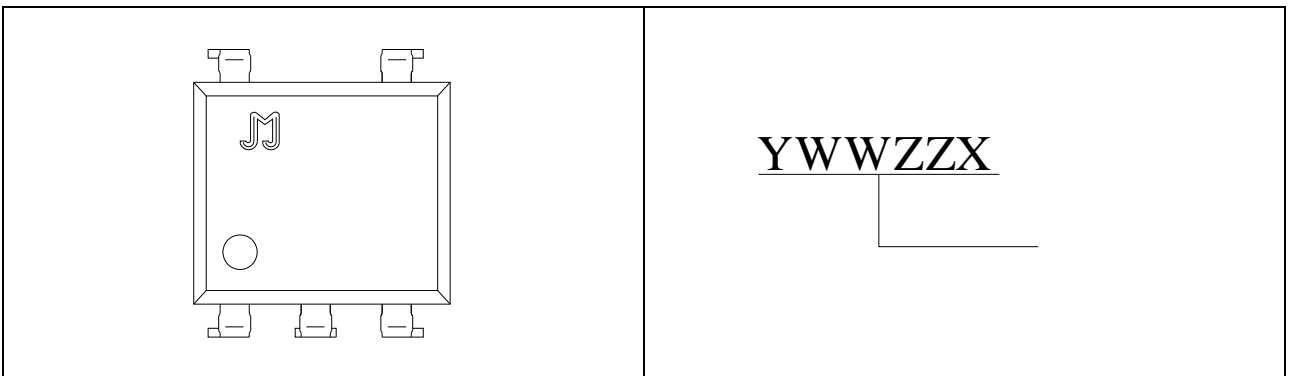
Parameter	Symbol	Condition	Min.	Typ.	Max.	Unit

ORDERING INFORMATION



Packing Quantity	
Option	Quantity

MARKING



Characteristics Curves

**FIG.1:**



**FIG.2:**

FIG.7:

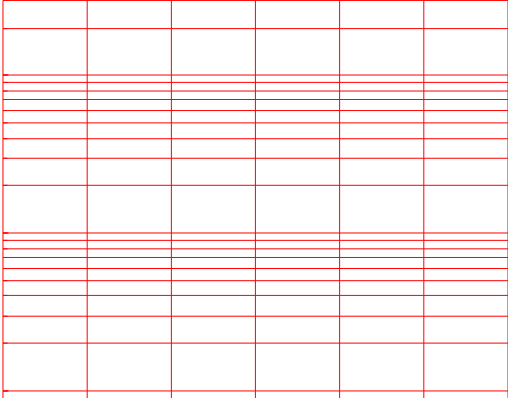


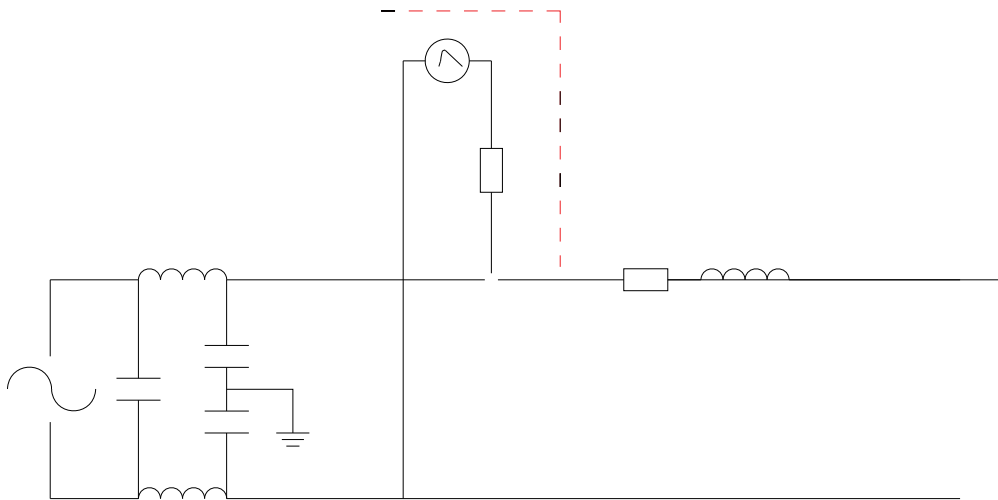
FIG.8:

TEST CIRCUITS

FIG.10:

FIG.11:

FIG.12:

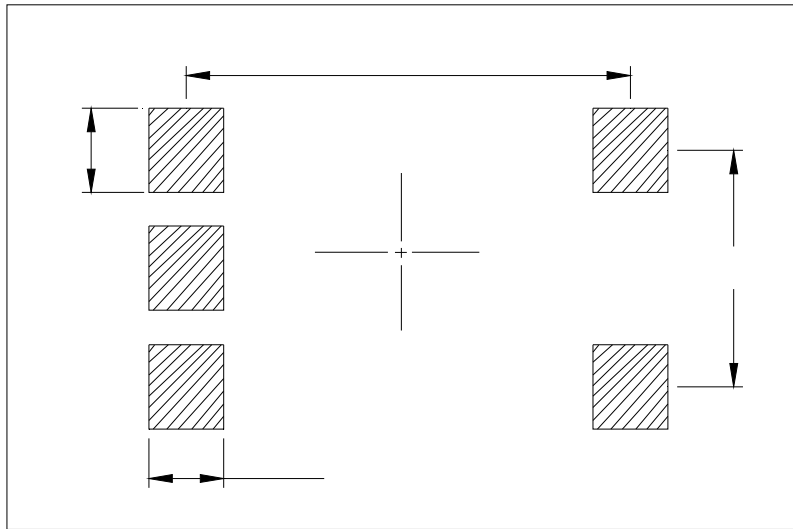


Package Dimension (Unit: mm)

Optical SMD Type:

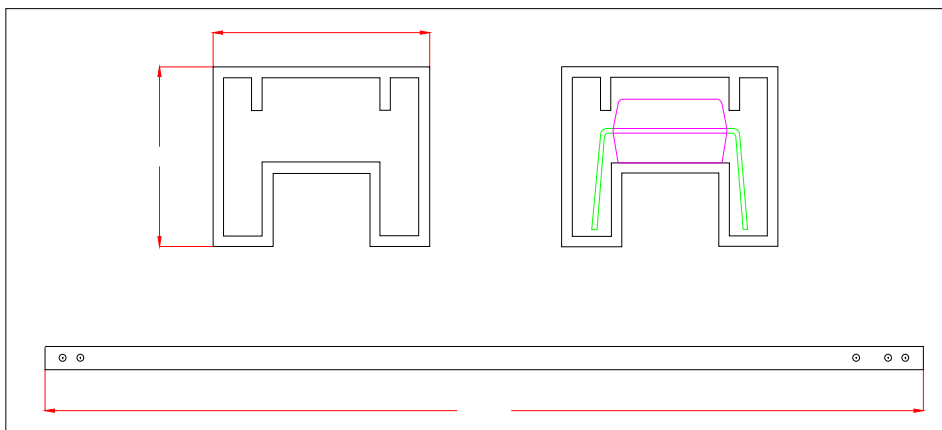
RECOMMENDED SOLDER MASK (Dimensions in mm unless otherwise stated)

Option SMD



TUBE SPECIFICATIONS (Dimensions in mm unless otherwise stated)

Standard DIP

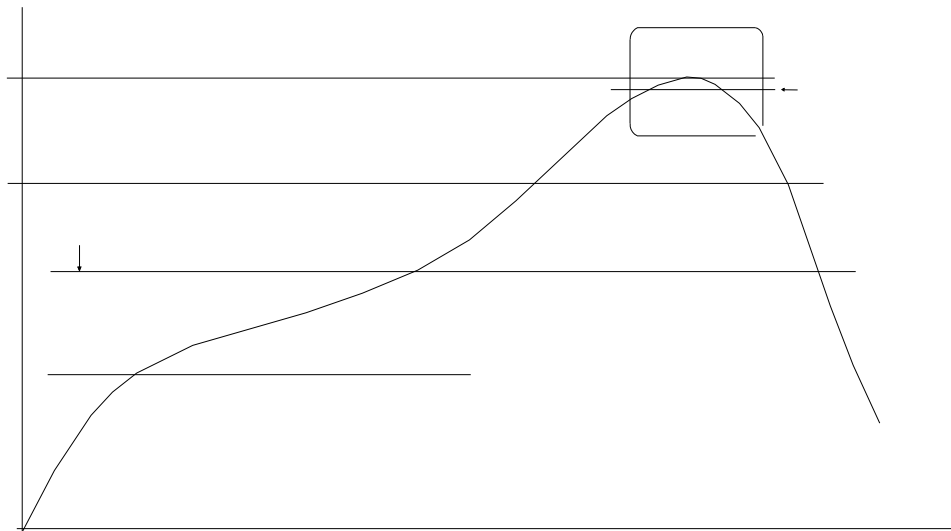
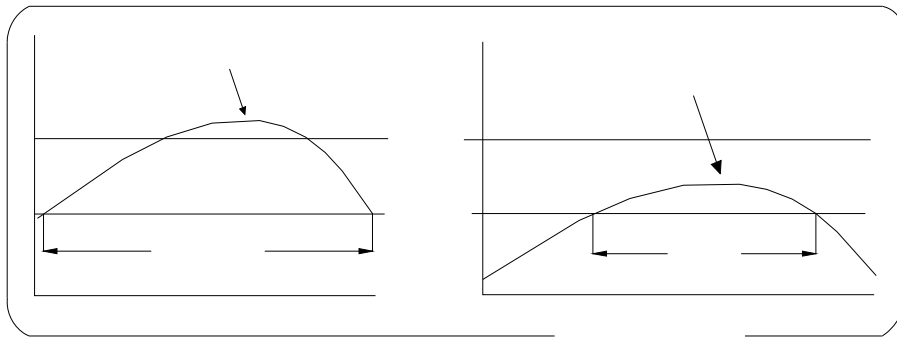


CARRIER TAPE SPECIFICATIONS (Dimensions in mm unless otherwise stated)

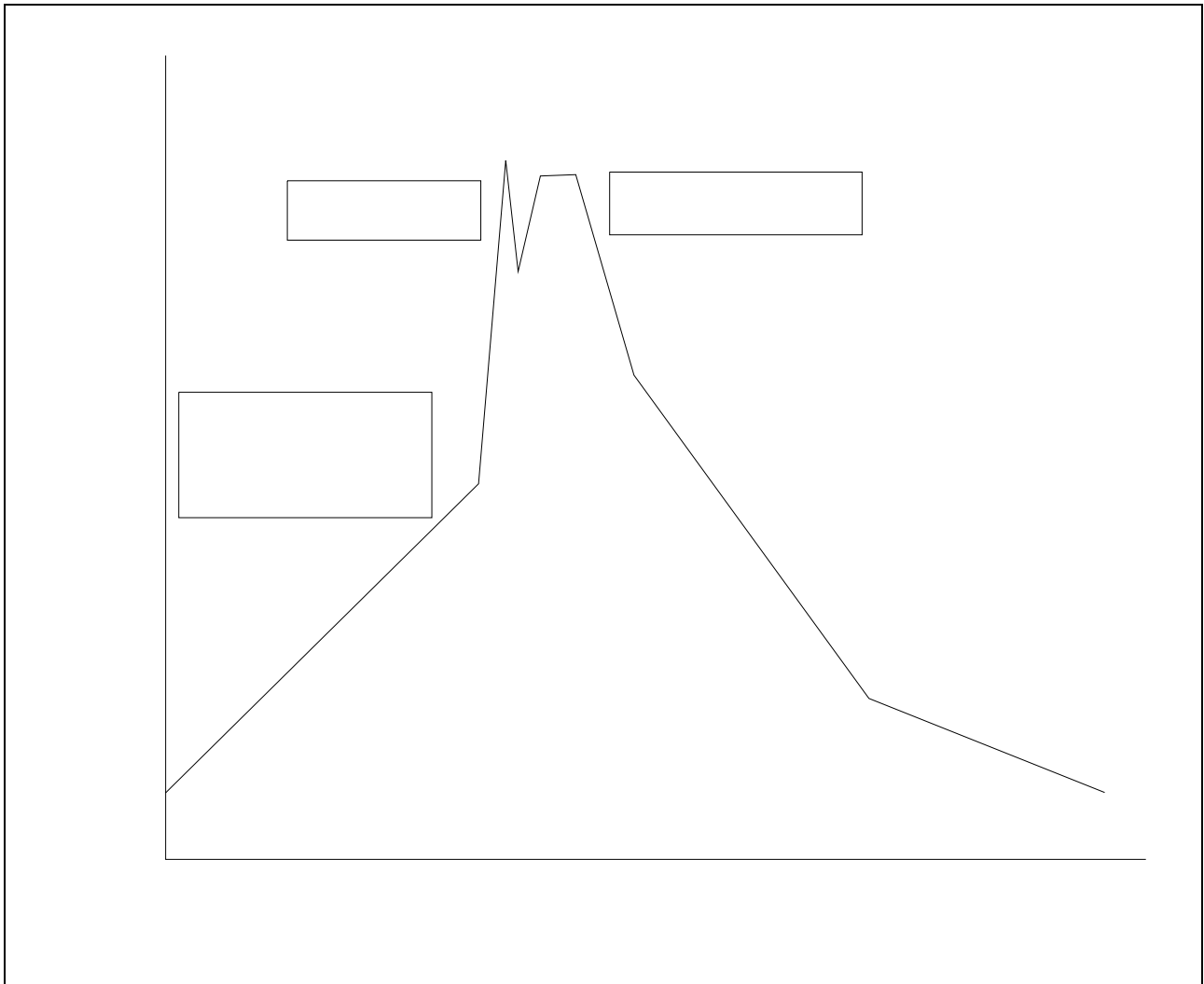
Option S/L



REFLOW INFORMATION



WAVE SOLDERING



HAND SOLDERING BY SOLDERING IRON

±

