






Characteristics Curves

FIG.1:

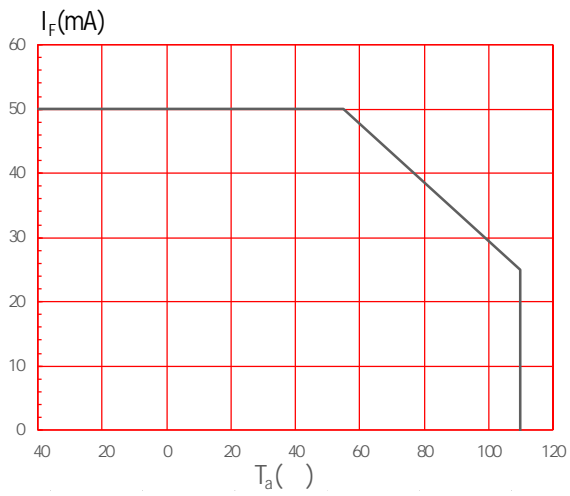


FIG.2:

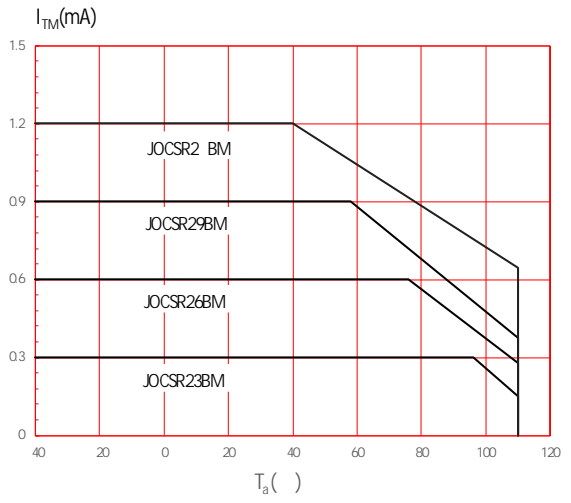


FIG.3:

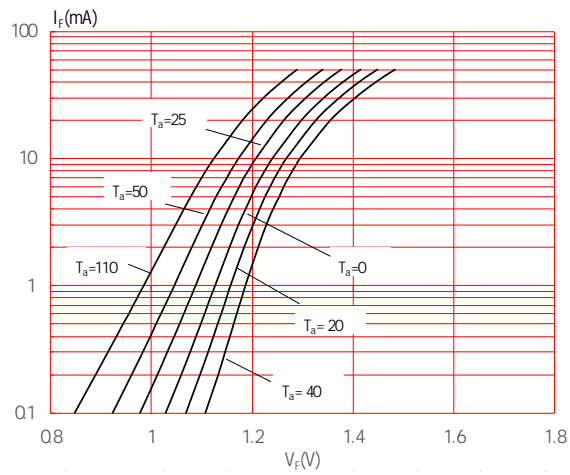


FIG.4:

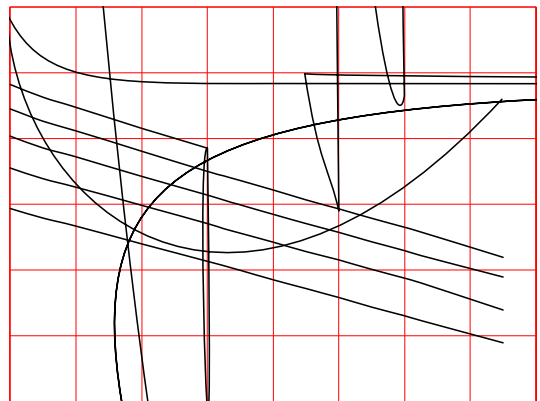


FIG.7:

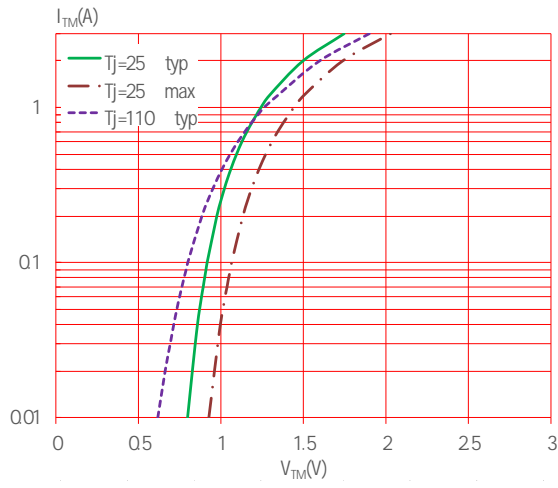
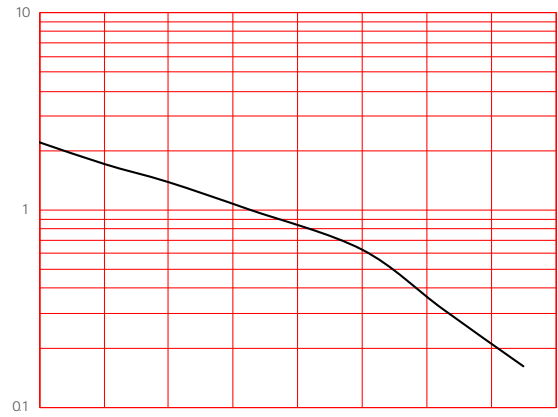


FIG.8:



TEST CIRCUITS

FIG.10:

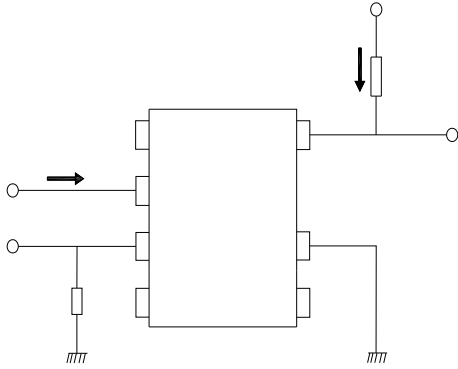
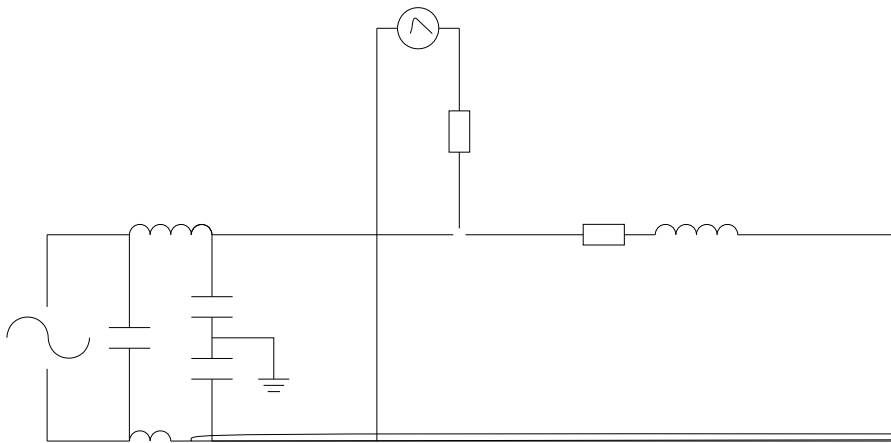


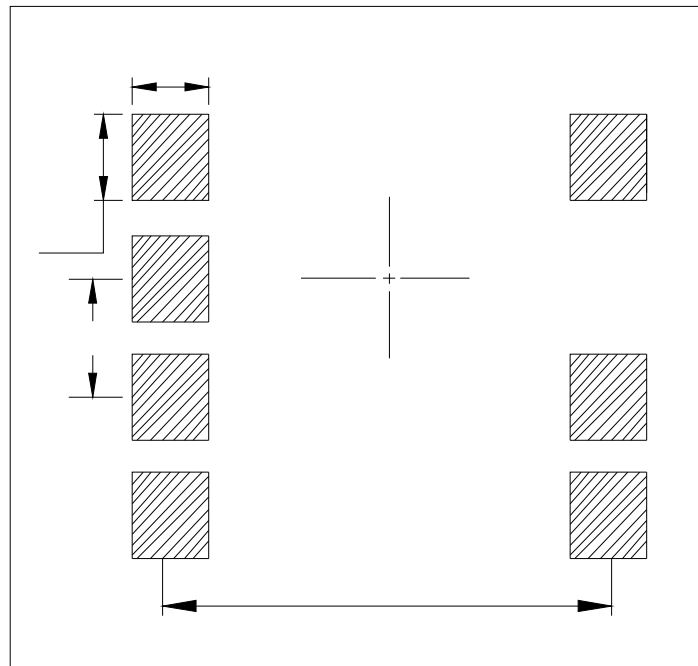
FIG.11:

FIG.12:



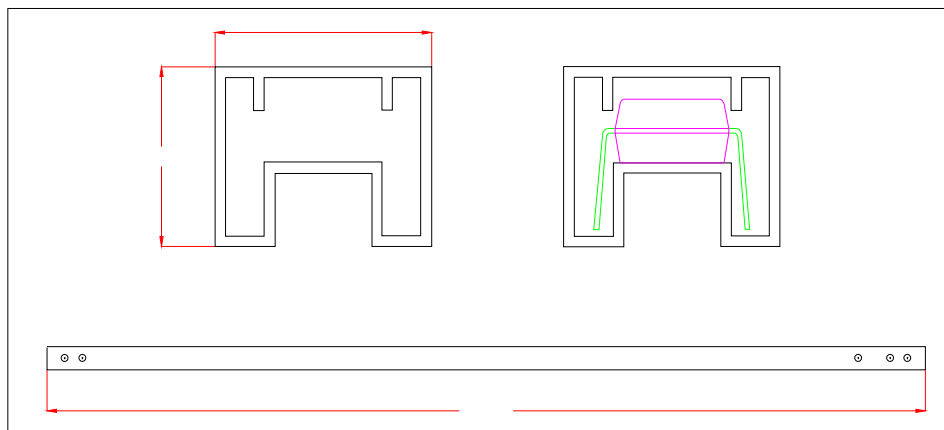


RECOMMENDED SOLDER MASK (Dimensions in mm unless otherwise stated)



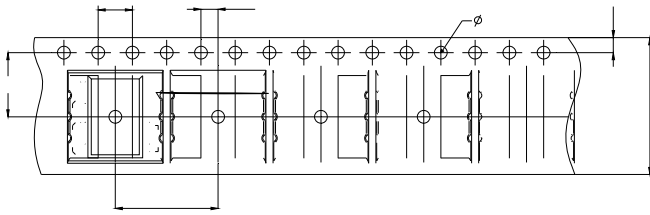
TUBE SPECIFICATIONS (Dimensions in mm unless otherwise stated)

Standard DIP

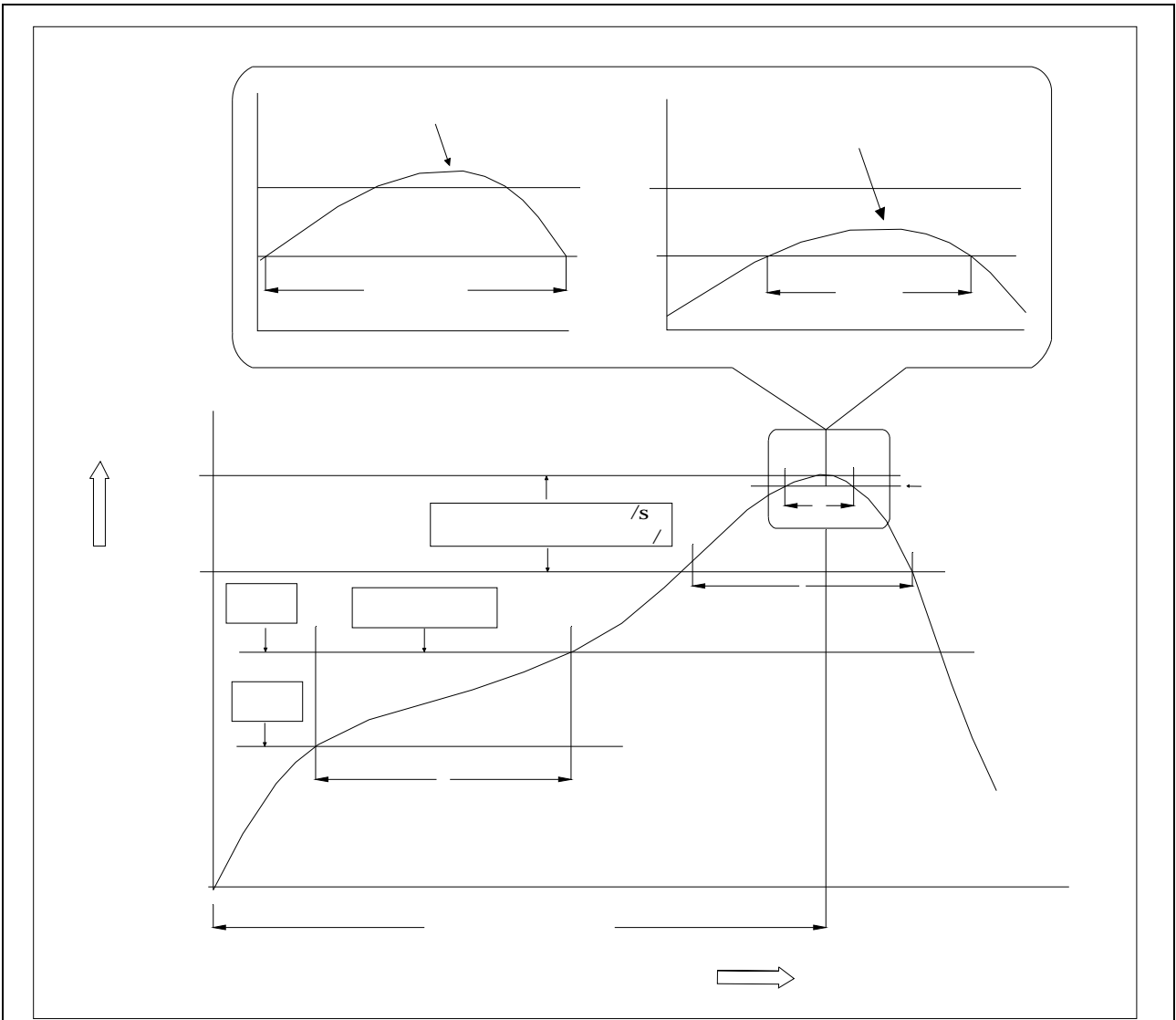


CARRIER TAPE SPECIFICATIONS (Dimensions in mm unless otherwise stated)

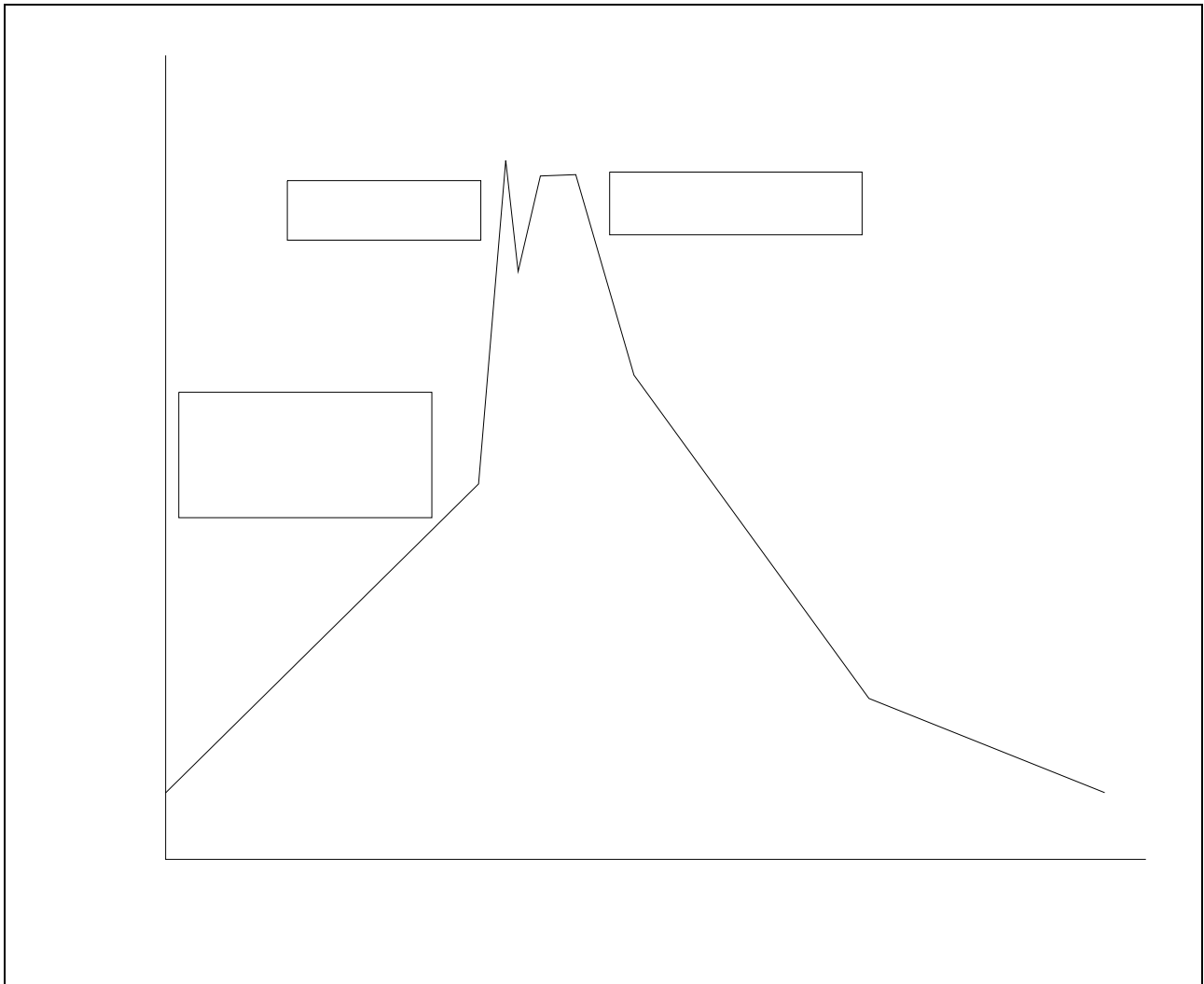
Option S/L




REFLOW INFORMATION




WAVE SOLDERING



HAND SOLDERING BY SOLDERING IRON

±

