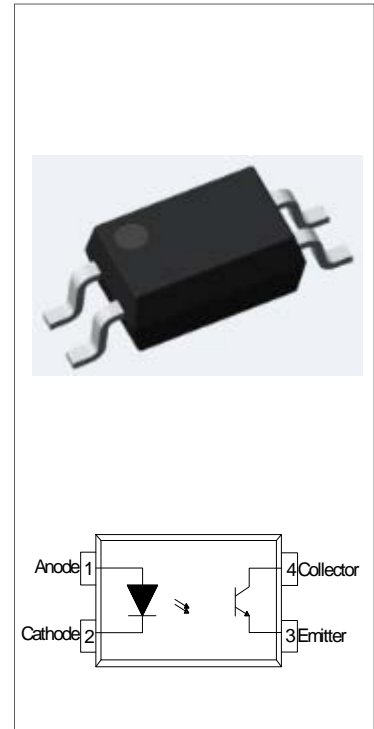




The products are transistor opto-couplers in a SSOP4 package. The device is a photoelectric coupler composed of light-emitting diode and phototransistor. The products are widely used in switching power supply, intelligent meter, industrial control, measuring instruments, office equipment such as copiers, household appliances: such as air conditioners, fans, water heaters, etc.



High isolation 3750 VRMS
 Operating temperature range -40°C to 125°C
 RoHS & REACH Compliance
 HBM: H3A; MM: M4; CDM:C3
 CQC approved
 VDE approved
 UL approved

(Temperature=25°C)

Input	Forward Current	I_F	50	mA
	Peak Forward Current	I_{FP}	1	A
	Reverse Voltage	V_R	6	V
	Power Dissipation	P_D	75	mW
Output	Collector-emitter Voltage	V_{CEO}	80	V
	Emitter-collector Voltage	V_{ECO}	7	V
	Collector Current	I_C	50	mA
	Power Dissipation	P_C	150	mW
Total Power Dissipation		P_{tot}	225	mW
Isolation Voltage		V_{iso}	3750	Vrms
Operating Temperature		T_{opr}	-40~+125	
Junction Temperature		T_j	135	
Storage Temperature		T_{stg}	-55~+125	
Soldering Temperature		T_{sol}	260	



:

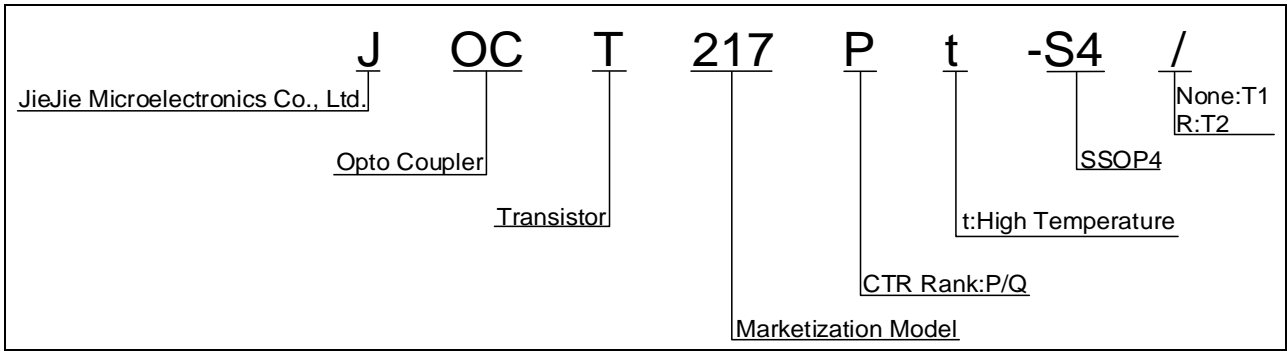
:

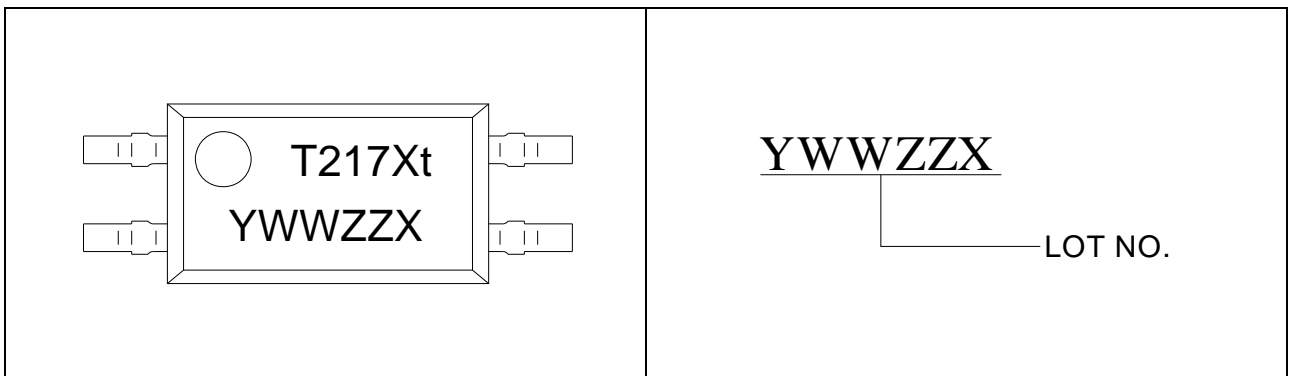
(Temperature=25°C)

Input	Forward Voltage	V_F	$I_F=10\text{mA}$	-	1.2	1.5	V
	Reverse Current	I_R	$V_R=6\text{V}$	-	-	1	μA
	Terminal Capacitance	C_t	$V=0,$ $f=1\text{MHz}$	-	30	250	pF
Output	Collector-Emitter dark current	I_{CEO}	$V_{CE}=20\text{V},$ $I_F=0$	-	-	50	nA
	Collector-Emitter breakdown voltage	BV_{CEO}	$I_C=0.1\text{mA}$ $I_F=0$	80	-	-	V
	Emitter-Collector breakdown voltage	BV_{ECO}	$I_E=0.1\text{mA}$ $I_F=0$	7	-	-	V

Current transfer ratio CTR

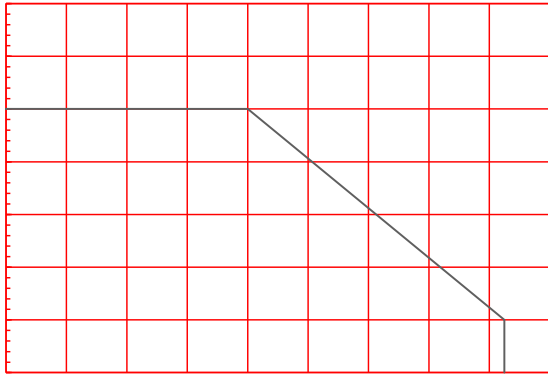
Transfer
Characteristics





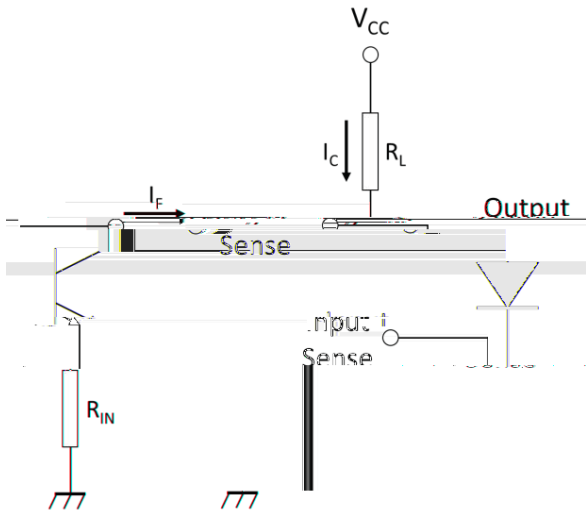


Max. Allowable LED Forward Current vs. Ambient Temperature

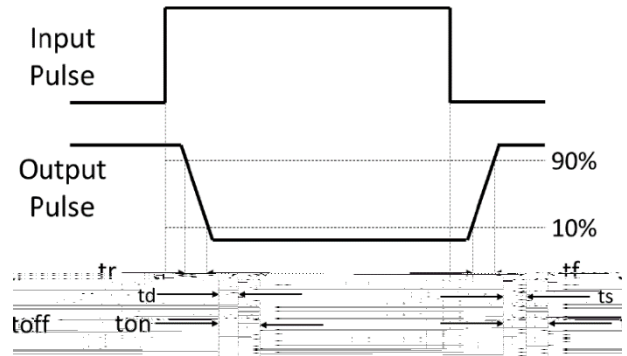


Collector Power Dissipation vs. Ambient Temperature

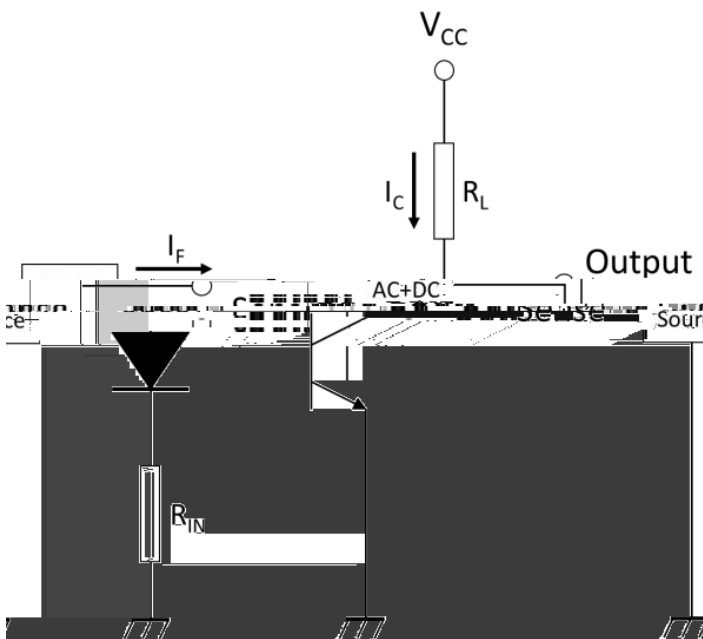
Test Circuits of Response Time

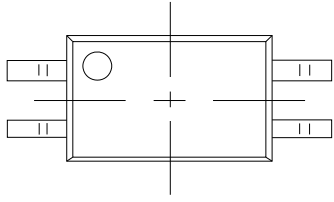


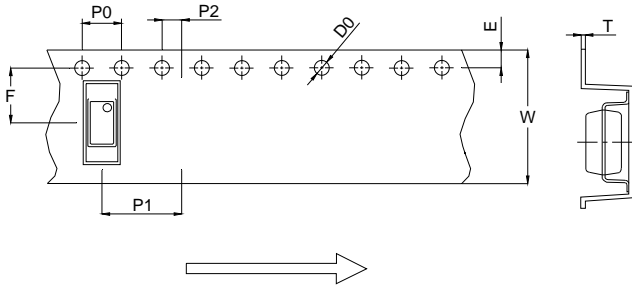
Curves of Response Time



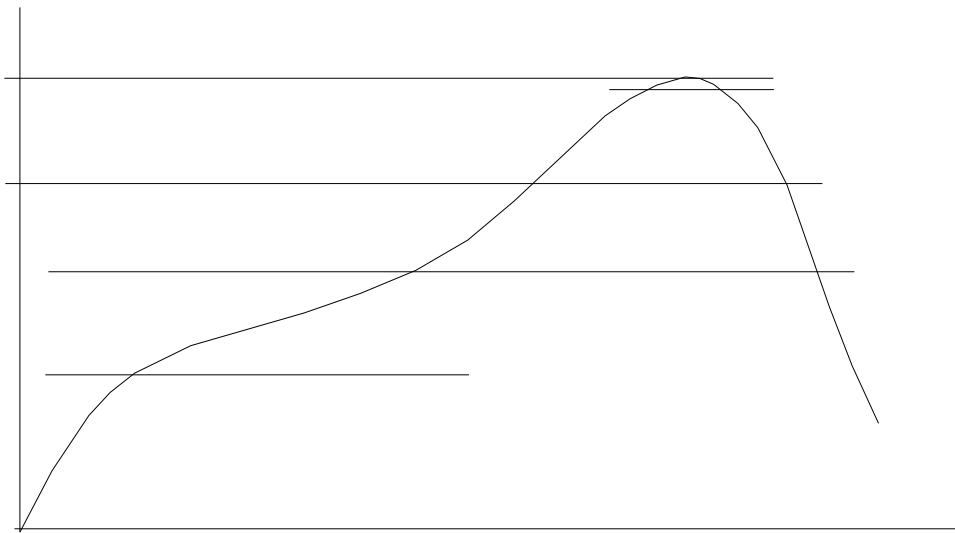
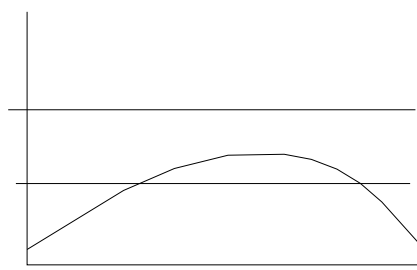
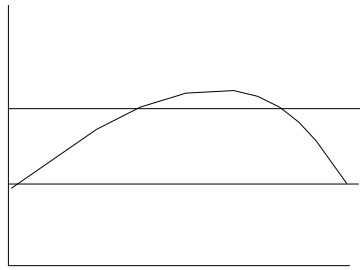
Test Circuits of Frequency Response







Ref.	Dimensions					
	Millimeters			Inches		
	Min.	Typ.	Max.	Min.	Typ.	Max.
D0		1.50	1.60		0.059	0.063
P0	3.90		4.10	0.154		0.161
P1	7.90		8.10	0.311		0.319
P2	1.90		2.10	0.075		0.083
E	1.65		1.85	0.065		0.073
F	5.40		5.60	0.213		0.220
T	0.20		0.30	0.008		0.012
W	11.90		12.30	0.469		0.484





Note: