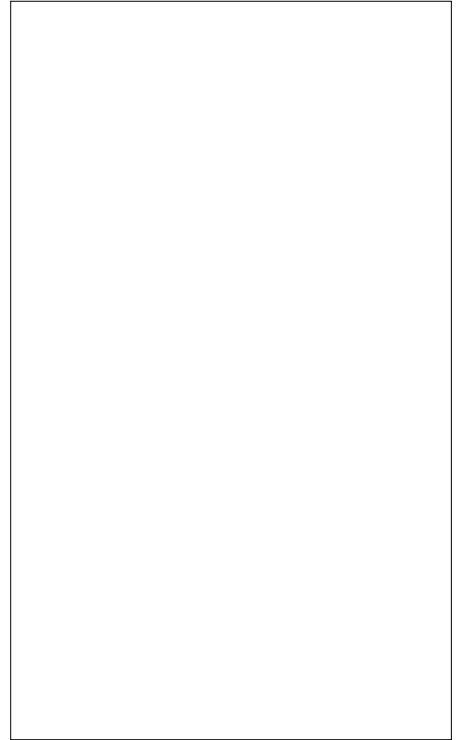




ACJT1035



|  |          |     |    |
|--|----------|-----|----|
| Peak pulse voltage<br>( $T_j=25$ ; non-repetitive, off-state; FIG.7) | $V_{pp}$ | 4.5 | kV |
|--|----------|-----|----|

ELECTRICAL CHARACTERISTICS (unless otherwise specified)

| Symbol   | Test Condition                      | Quadrant | Value |     | Unit |
|----------|-------------------------------------|----------|-------|-----|------|
| $I_{GT}$ | $V_D=12V R_L=33$                    | - -      | MAX.  | 35  | mA   |
| $V_{GT}$ |                                     | - -      | MAX.  | 1   | V    |
| $V_{GD}$ | $V_D=V_{DRM} T_j=125$<br>$R_L=3.3k$ | - -      | MIN.  | 0.2 | V    |
| $I_L$    | $I_G=1.2I_{GT}$                     | -        | MAX.  |     | mAD  |

ORDERING INFORMATION

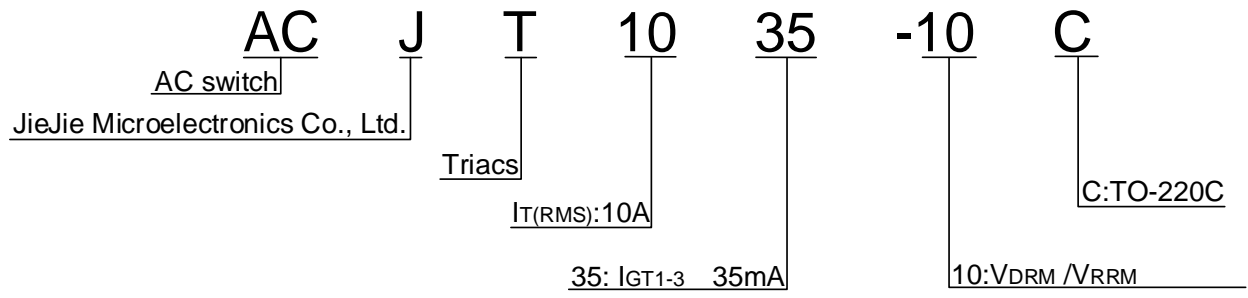
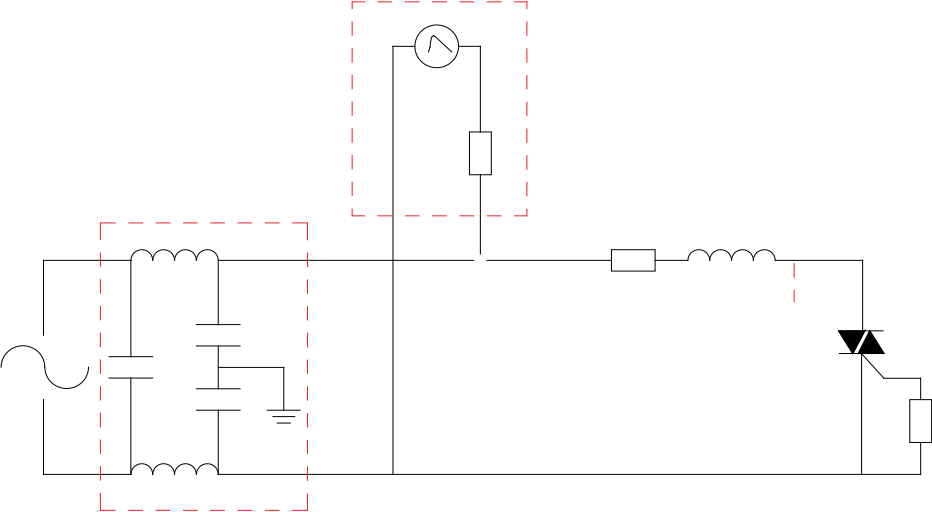




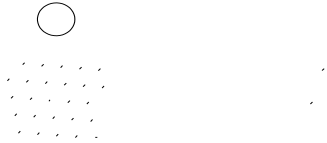
FIG.7 Test circuit for inductive and resistive loads to IEC-61000-4-5 standards



ORDERING INFORMTON

|           |                                  |         |   |
|-----------|----------------------------------|---------|---|
| Order coe | Voltage<br>$V_{DRM}/V_{RRM}$ (V) | IGT(m ) | 03 (ag ( )-13 )-3.8 (o)5 404J ET EMC 063498 f* 156. |
|-----------|----------------------------------|---------|---|

PACKAGE MECHANICAL DATA



Information furnished in this document is believed to be accurate and reliable. However, Jiangsu JieJie Microelectronics Co., Ltd. assumes no responsibility for the consequences of use without consideration for such information nor use beyond it. Information mentioned in this document is subject to change without notice, apart from that when an agreement is signed, Jiangsu JieJie complies with the agreement.

Products and information provided in this document have no infringement of pat2 ( )10 (f)-8 (r)7 (/3 (i) f