

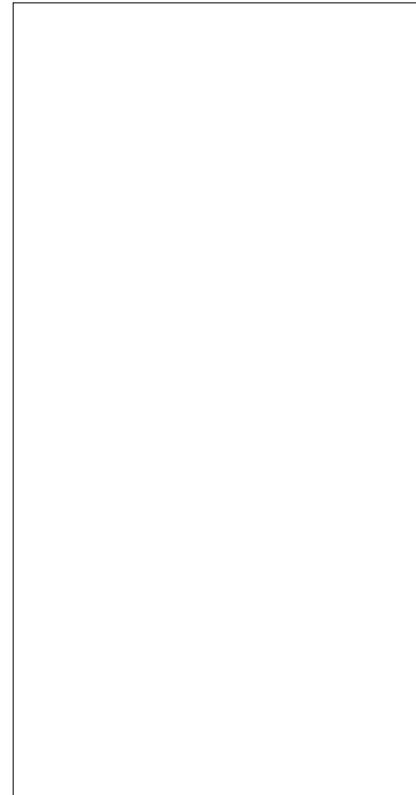


JCT640AH 40A SCR

Rev A.1.1

DESCRIPTION:

With high ability to withstand the shock loading of large current, JCT640AH SCR provides high dV/dt rate with strong resistance to electromagnetic interference. It is especially recommended for use on solid state relay, motorcycle, power charger, T-tools etc. From all three terminals to external heatsink, JCT640AH provides a rated insulation voltage of $2500 V_{RMS}$, complying with UL standards (File ref: E252906). Package TO-220A is RoHS compliant.



MAIN FEATURES

ABSOLUTE MAXIMUM RATINGS

Parameter

Symbol

JCT640AH



Peak gate current ($t_p=20\mu s$, $T_j=150$)	I_{GM}	10	A
Average gate power dissipation ($T_j=150$)	$P_{G(AV)}$	1	W
Peak gate power	P_{GM}	20	W
Peak pulse voltage ($T_j=25$; non-repetitive, off-state; FIG.7)	V_{pp}	0.5	kV

ELECTRICAL CHARACTERISTICS (unless otherwise specified)

Symbol	Test Condition	Value			Unit
		MIN.	TYP.	MAX.	
I_{GT}	$V_D=12V$ $R_L=33$	-	-	35	mA
V_{GT}		-	-	1	V
V_{GD}	$V_D=V_{DRM}$ $T_j=150$ $R_L=3.3k$	0.2	-	-	V
I_L	$I_G=1.2I_{GT}$	-	-	80	mA
I_H	$I_T=500mA$	-	-	70	mA
dV/dt	$V_D=400V$ Gate Open $T_j=125$	1300	-	-	V/ μs
	$V_D=400V$ Gate Open $T_j=150$	700	-	-	
t_{on}	$I_G=40mA$ $I_A=400mA$ $I_R=40mA$ $T_j=25$	-	2	-	μs
t_{off}		-	60	-	

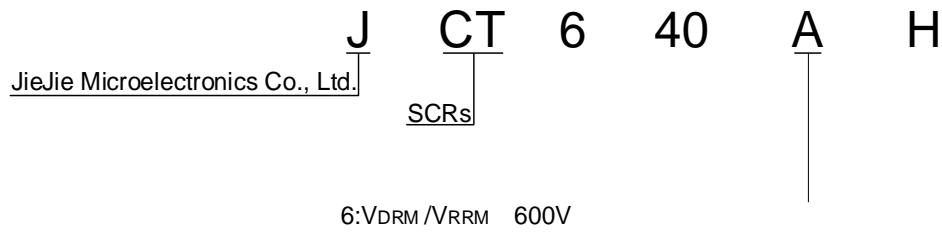
STATIC CHARACTERISTICS

Symbol	Parameter	Value(MAX)	Unit
V_{TM}	$I_{TM}=80A$ $t_p=380\mu s$ $T_j=25$	1.55	V

JCT640AH

 **Ji e Mi cr oel ect r oñ .cñ t d.**

ORDERING INFORMATION 8321738379206828CS0250M450220915394935



JCT640AH

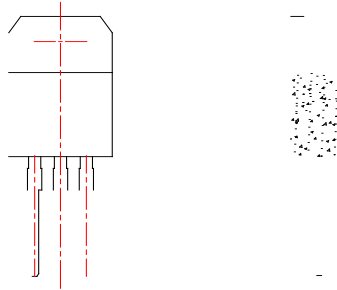
Ji di eM

ORDERING INFORMATION

Or der code	Vol t age V_{DRM}/V_{RRM} (V)	IGT(mA)	Package	Base qt y. (p cs)	Del i ver y m ode
JCT640AH	600	35	TO-220A(In s)	50	Tube

Documen t

PACKAGE MECHANICAL DATA



JCT640AH