



## T0650H-8E 6A TRIAC

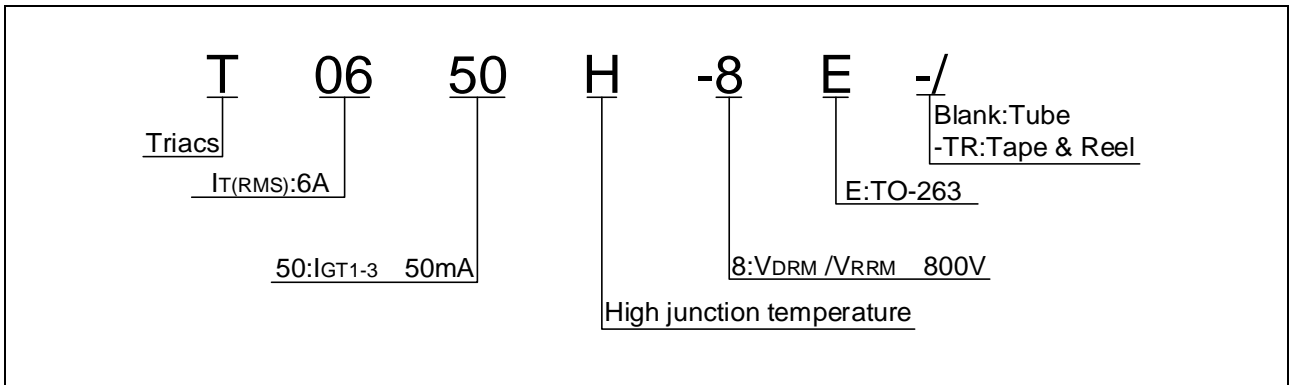
Rev.A.1.1

### DESCRIPTION:

The T0650H-8E triac is suitable for general purpose AC switching. It can be used as an ON/OFF function in applications such as heating regulation, induction motor starting circuits, for phase control operation in light dimmers, motor speed controllers. Compared to traditional t



ORDERING INFORMATION



MARKING

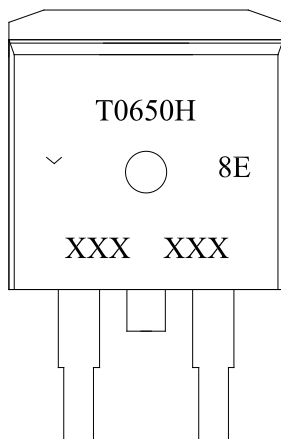


FIG.1: Maximum power dissipation versus RMS on-state current

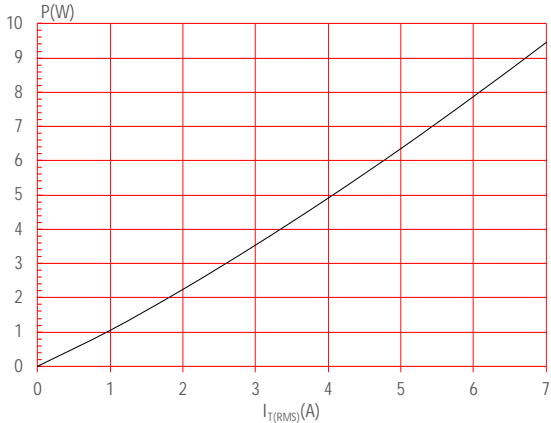
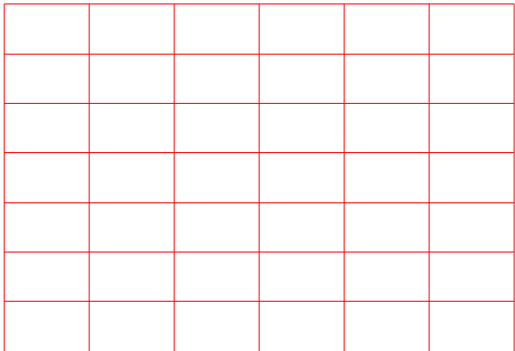


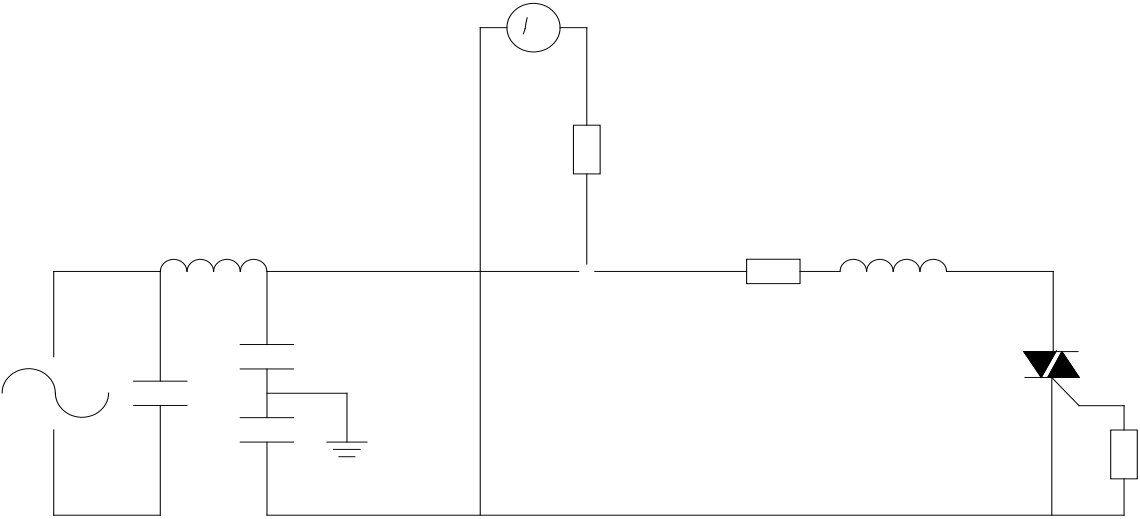
FIG.2: RMS on-state current versus case temperature



**FIG.7:** Relative variations of gate trigger current, holding current and latching current versus junction temperature



FIG.8 Test circuit for inductive and resistive loads to IEC-61000-4-5 standards







DELIVERY MODE



Information furnished in this document is believed to be accurate and reliable. However,