



T2035H-6E 20A TRIAC

Rev.A.1.1

## DESCRIPTION:

The T2035H-6E triac is suitable for general purpose AC switching. It can be used as an ON/OFF function in applications such as heating regulation, induction motor starting circuits, for phase control operation in light dimmers, motor speed controllers. Compared to traditional triacs, T2035H-6E provides a very high switching capability up to junction temperatures of 150°C. Package TO-263 is RoHS compliant.

## MAIN FEATURES

## ABSOLUTE MAXIMUM RATINGS

| Parameter                                      | Symbol    | Value   | Unit |
|--|-----------|---------|------|
| Storage junction temperature range             | $T_{stg}$ | -40-150 |      |
| Operating junction temperature range           | $T_j$     | -40-150 |      |
| Repetitive peak off-state voltage ( $T_j=25$ ) | $V_{DRM}$ |         |      |

|  |          |   |    |
|--|----------|---|----|
| Peak pulse voltage<br>( $T_j=25$ ; non-repetitive, off-state; FIG.8) | $V_{pp}$ | 4 | kV |
|--|----------|---|----|

ELECTRICAL CHARACTERISTICS (unless otherwise specified)



FIG.1: Maximum power dissipation versus RMS on-state current

FIG.7: Relative variations of gate trigger current, holding current and latching current versus junction temperature

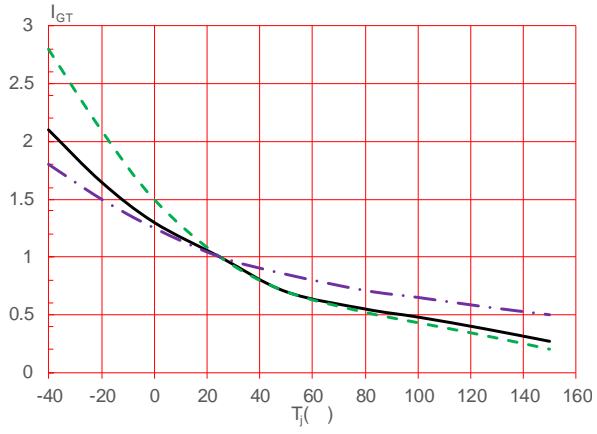
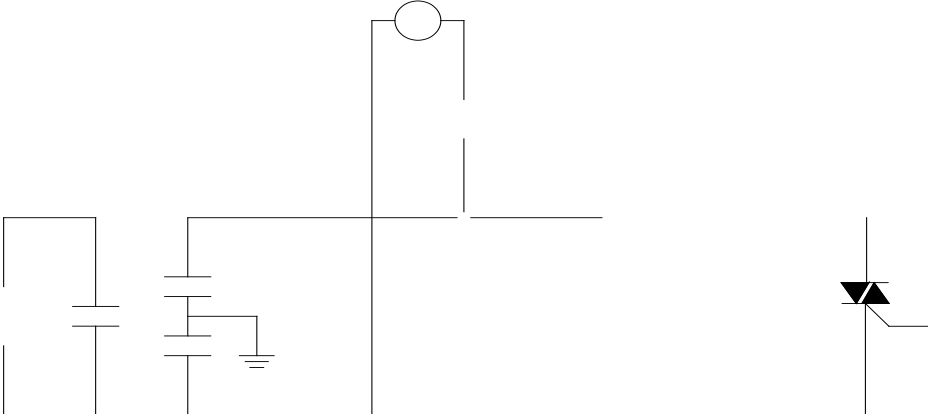
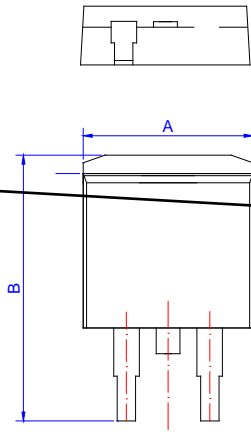


FIG.8: Test circuit for inductive and resistive loads to IEC-61000-4-5 standards



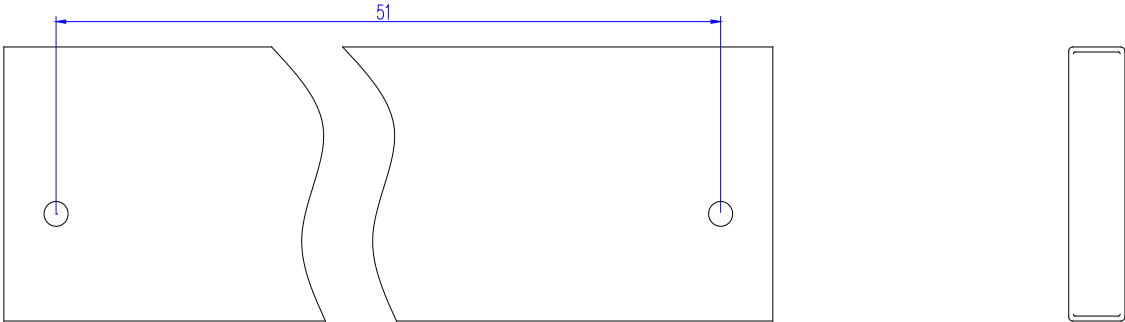


PACKAGE MECHANICAL DATA



| Ref. | Dimensions  |      |       |        |      |       |
|------|-------------|------|-------|--------|------|-------|
|      | Millimeters |      |       | Inches |      |       |
|      | Min.        | Typ. | Max.  | Min.   | Typ. | Max.  |
| A    | 9.90        |      | 10.20 | 0.390  |      | 0.402 |
| B    | 14.70       |      | 15.80 | 0.579  |      | 0.622 |
| C    | 9.40        |      | 9.60  | 0.370  |      | 0.378 |
| D    | 2.40        |      |       | 0.094  |      |       |
| E    | 1.20        |      | 1.50  | 0.047  |      | 0.059 |
| F    | 0.75        |      | 0.85  | 0.029  |      | 0.033 |
|      |             |      |       |        |      |       |
|      |             |      |       |        |      |       |
|      |             |      |       |        |      |       |
|      |             |      |       |        |      |       |

DELIVERY MODE



Information furnished in this document is believed to be accurate and reliable. However, Jiangsu JieJie Microelectronics Co., Ltd. assumes no responsibility for the consequences of use without consideration for such information nor use beyond it. Information mentioned in this document is subject to change without notice, apart from that when an agreement is signed, Jiangsu JieJie complies with the agreement.

Products and information provided in this document have no infringement of patents. Jiangsu JieJie assumes no responsibility for any infringement of other rights of third parties which may result from the use of such products and information. This document supersedes and replaces all information previously supplied.



is a registered trademark of Jiangsu JieJie Microelectronics Co., Ltd.

Copyright © 2025 Jiangsu JieJie Microelectronics Co., Ltd. All rights reserved.