



**ELECTRICAL CHARACTERISTICS** ( $T_j=25$  unless otherwise specified)

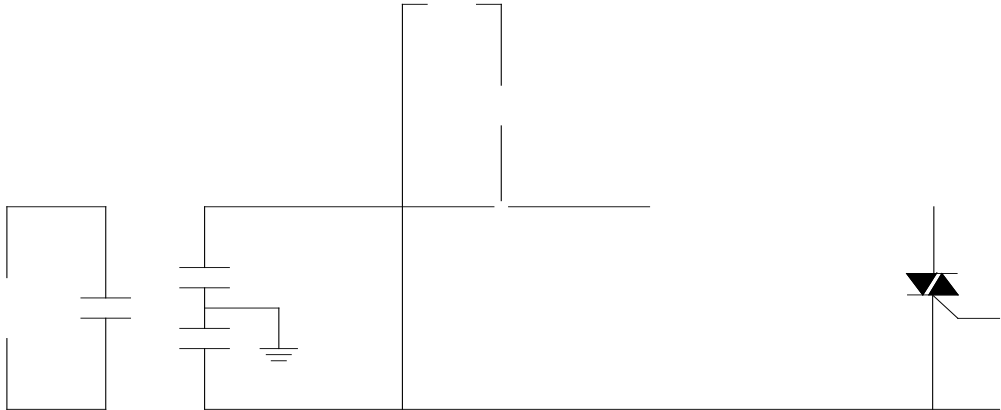
Symbol	Test Condition	Quadrant	Value			
I <sub>GT</sub>	V <sub>D</sub> =12V R <sub>L</sub> =33	- -	MAX.	5	mA	
				10		
		- -		5		

**ORDERING INFORMATION**



**JST131V-800D**

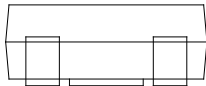
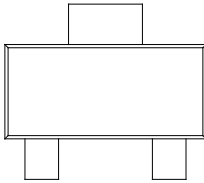
FIG.8 Test circuit for inductive and resistive loads to IEC-61000-4-5 standards



**JST131V-800D**

**JieJie Microelectronics Co., Ltd**

PACKAGE MECHANICAL DATA AA



Ref.	Dimensions					
	Millimeters			Inches		
	Min.	Typ.	Max.	Min.	Typ.	Max.
A	1.50	1.60	1.80	0.059	0.063	0.071
A1	0.01	0.06	0.10	0.001	0.002	0.004
B	2.90	3.00	3.10	0.114	0.118	0.122
B1	0.60	0.70	0.80	0.024	0.028	0.031
C	0.22	0.26	0.32	0.009	0.010	0.013
D	6.30	6.50	6.70	0.248	0.256	0.264
E	3.30	3.50	3.70	0.130	0.138	0.146
F	4.40			0.173		
F1	2.20			0.087		
G	0.50		1.00	0.020		0.039
H	1.50	1.75	2.00	0.059	0.069	0.079
J	6.70	7.00	7.30	0.264	0.276	0.287
K						

DELIVERY MODE T

