



JST137C-800FX 8A TRIAC

Rev.A.1.1

DESCRIPTION:

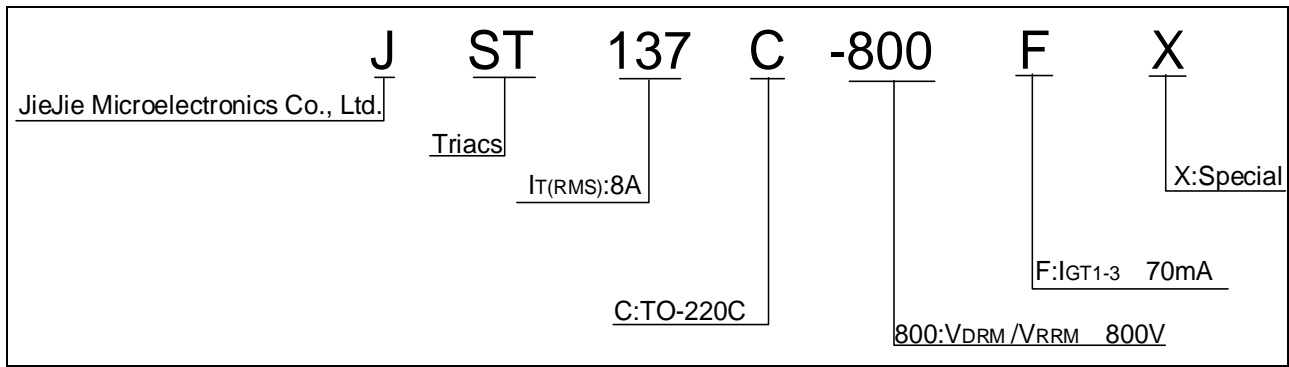
The JST137C-800FX triac is suitable for general purpose

AC switching. It can be used as an ON/OFF switch.

ELECTRICAL CHARACTERISTICS ($T_j=25$ unless otherwise specified)

Symbol	Test Condition	Quadrant	Value	Unit
I_{GT}	V - - MAX.			
V_{GT}		- -	MAX.	1978 Tm/P2 Tc -0.002 Tw 0.56 C

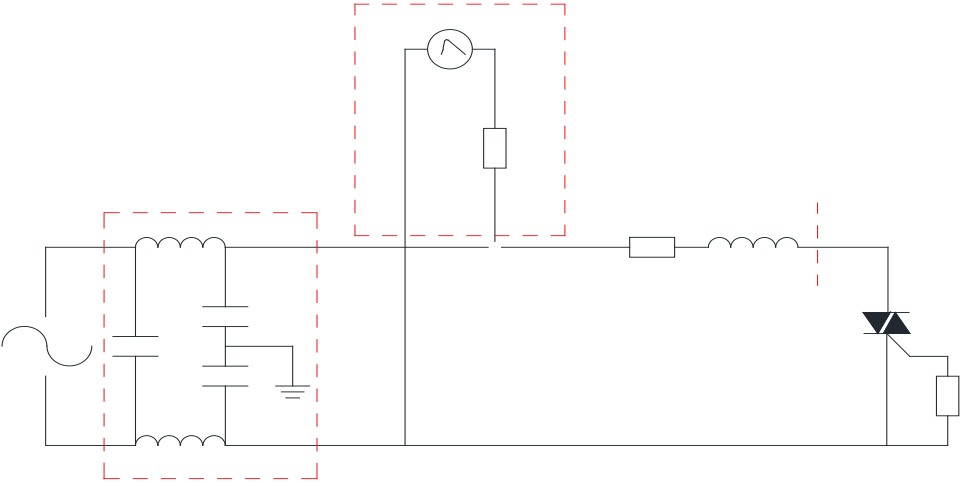
ORDERING INFORMATIONc



JST137C-800FX

JieJie Microelectronics Co., Ltd 0.65 () 493

FIG.7 Test circuit for inductive and resistive loads to IEC-61000-4-5 standards



ORDERING INFORMATION

Order code	Voltage V_{DRM}/V_{RRM} (V)	IGT(mA)	Package	Base qty. (pcs)	Delivery mode D
------------	----------------------------------	---------	---------	--------------------	--------------------

PACKAGE MECHANICAL DATA



