



JST137K-600G 8A TRIAC

Rev.A.1.1

The JST137K-600G triac is suitable for general purpose AC switching. It can be used as an ON/OFF function in applications such as heating regulation, induction motor starting circuits, for phase control operation in light dimmers, motor speed controllers. Package TO-252 is RoHS compliant.

Parameter	Symbol	Value	Unit
Storage junction temperature range	T_{stg}	-40-150	
Operating junction temperature range	T_j	-40-125	
Repetitive peak off-state voltage ($T_j=25$)	V_{DRM}	600	V
Repetitive peak reverse voltage ($T_j=25$)	V_{RRM}	600	V

J ST 137 K -600 G -/
|
JieJie Microelectronics Co., Ltd.
|
Triacs

600:V~~600~~RM Dm sc1J /TT2 1 Tf 0 Tc 0 Tw 8.7734 0 0

FIG.1: Maximum power dissipation versus RMS on-state current

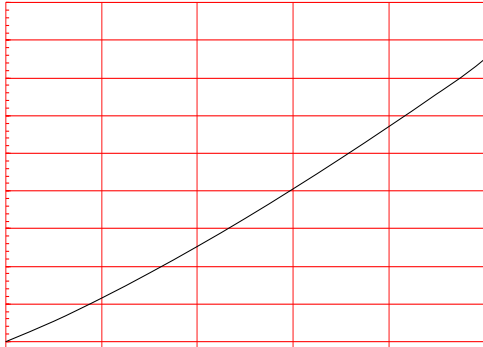


FIG.2: RMS on-state current versus case temperature

FIG.7: Relative variations of gate trigger current, holding current and latching current versus junction temperature

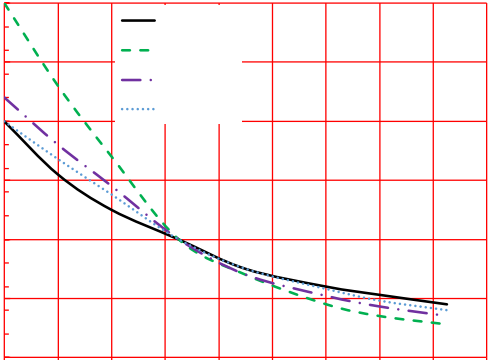
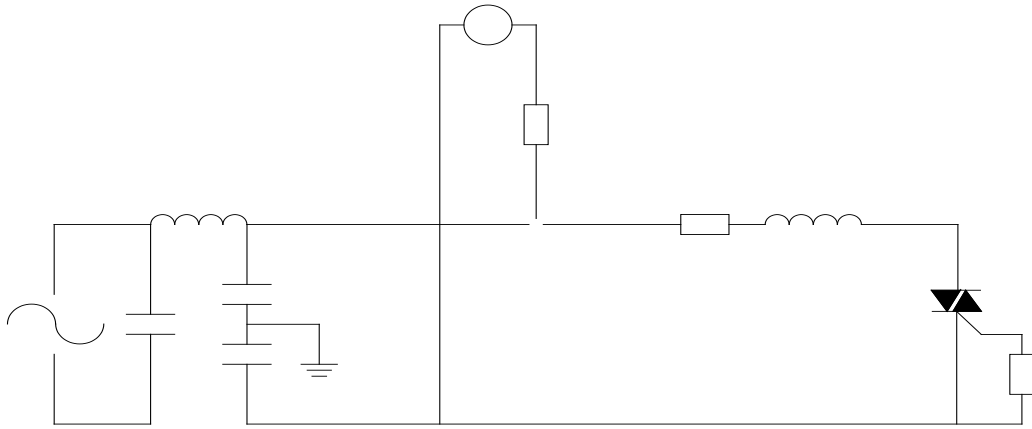


FIG.8 Test circuit for inductive and resistive loads to IEC-61000-4-5 standards



Order code	Voltage V_{DRM}/V_{RRM} (V)	IGT(mA)		Package	Base qty. (pcs)	Delivery mode
		-	-			
JST137K-600G	600	50	100	TO-252	80	Tube
JST137K-600G-TR					2,500	Tape & Reel

Document Revision History

Date	Revision	Changes
Apr.14, 2023	A.1.0	Last updated
Oct.22, 2025	A.1.1	Revise PACKAGE MECHANICAL DATA

Ref.	Dimensions					
	Millimeters			Inches		
	Min.	Typ.	Max.	Min.	Typ.	Max.
A						
A2						
B						
C						
D						
E						

Gure <0 Td [(+)-13.7 (86)]TJ 0 Tc 0 Tw 1.507 0 T1 Tc 0 T

.7.8/He8]2-0.00426.3 (.)Tj 6.75Tw 3.950 Td (-3.438 Td

