

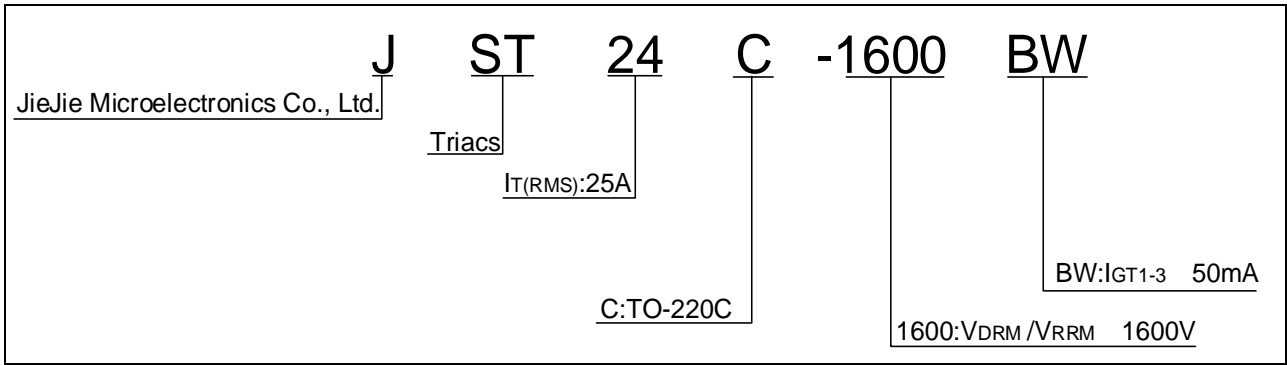


Peak pulse voltage ( $T_j=25$ ; non-repetitive, off-state; FIG.7)	$V_{pp}$	2.5	kV
--	----------	-----	----

**ELECTRICAL CHARACTERISTICS**( $T_j=25$  unless otherwise specified)

Symbol	Test Condition	Quadrant	Value	Unit
$I_{GT}$	$V_D=12V$ $R_L=33$	- -	MAX.	50 mA

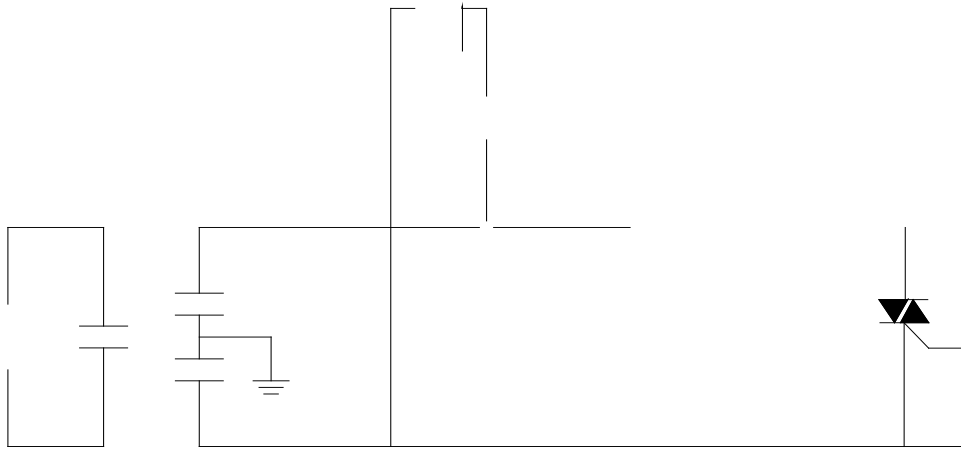
ORDERING INFORMATION



MARKING



FIG.7 Test circuit for inductive and resistive loads to IEC-61000-4-5 standards





PACKAGE MECHANICAL DATA

