

P_{tot} (T _j =25 °C; see FIG. 8)	V_p	4	W
---	-------	---	---

ELECTRICAL CHARACTERISTICS

Symbol	Test Condition	Quadrant	Value	Unit
I_{BT}	V _D = 12V, L = 33			

ORDERING INFORMATION

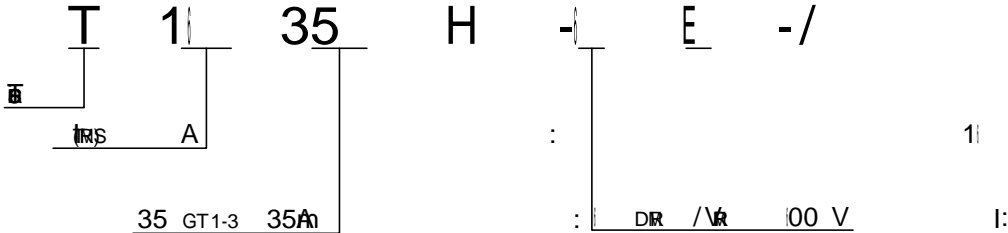


FIG.1: $I_{T(RMS)}$

0 10

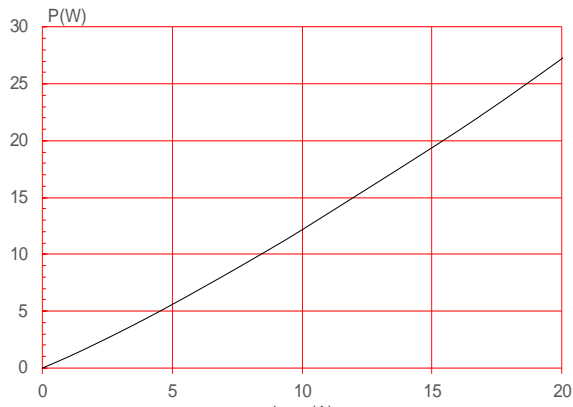


FIG.2: $R_{\theta(jc)}$

0 10

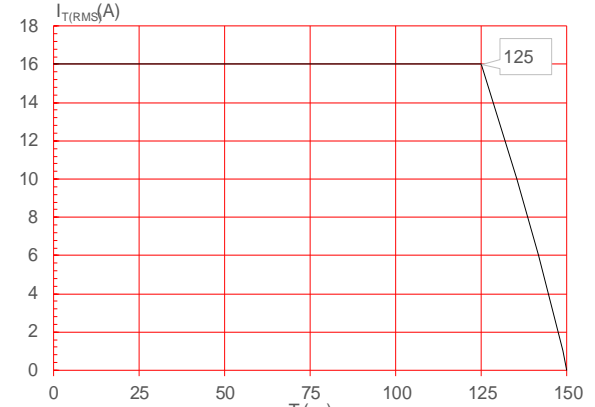


FIG.3: $R_{\theta(jc)}$

-4006 Tw 0833 0 Td [8-

FIG.7: ~~IGT~~
~~IGT~~
~~IL~~

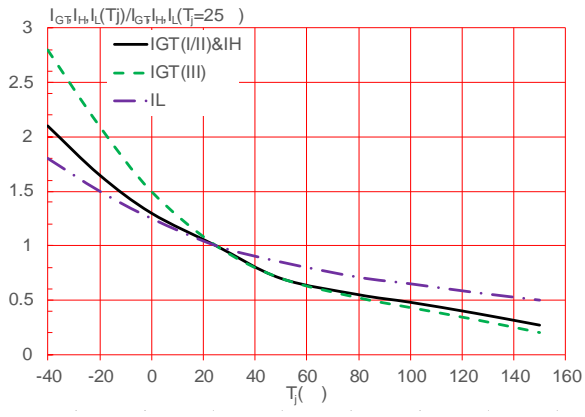
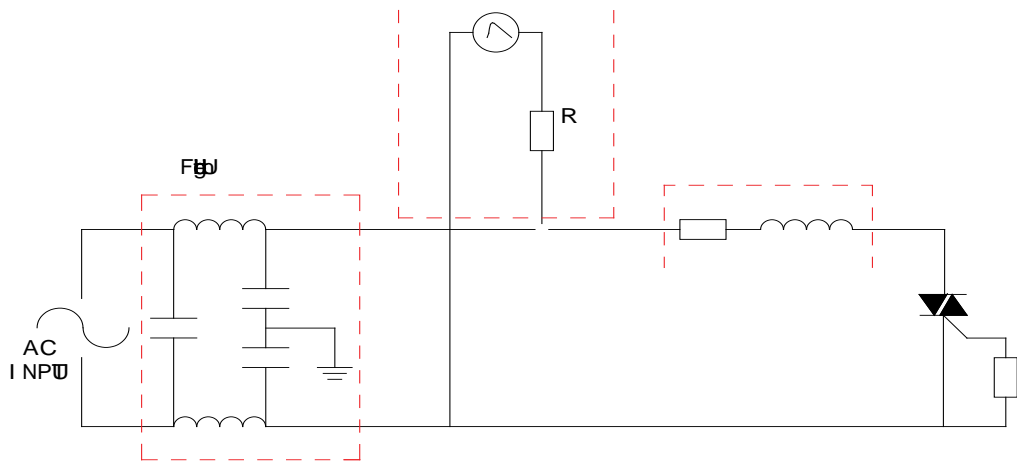


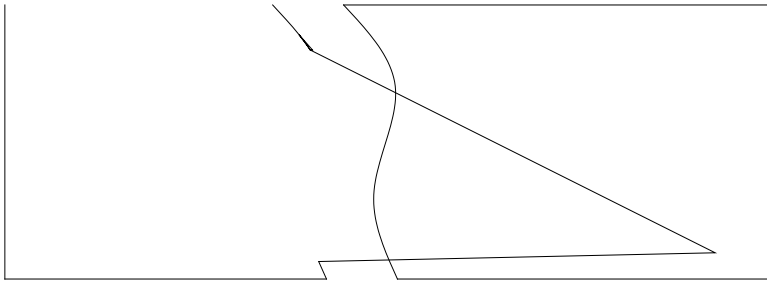
FIG.8

IEC1000-4-5

IEC1000-4-5
1.2/50 μ S voltage surge
8/20 μ S current surge



DELIVERY MODE



I f...
 J...
 f...
 r...
 g...
 P...
 J...
 p...